

2021



Stedman[®]
collection



Our collection.

Since 1953, the Stedman® brand has stood for **reliable product quality, excellent value for money and ethically responsible manufacturing** conditions. Our 2021 collection includes a wide range of products for men, women and children, from simple T-shirts and sweatshirts in popular colours to functional sports and versatile outdoor clothing.

We are proud that we have been able to focus more and more on **environmentally friendly materials** in recent years and are convinced that this change will have a lasting positive impact on the textile industry. Only by acting responsibly do we have the opportunity to create a better future for people and nature.

HIGHLIGHTS 2021

SUSTAINABILITY

With our sustainable collection we can make a small contribution to **reducing the environmental impact** caused by textile production. Discover our eco-friendly styles **made of organically grown cotton** and our modern sports styles **made from recycled plastic bottles** on pages 6-9.

SIZES AND COLOURS


In response to numerous requests we have again **expanded our size and colour range** for some of our most popular promotional styles. For an overview of all size and colour additions see page 10.

LAST CHANCE

This year, we offer a **special discount** on selected styles and colours. Look out for our **red discount tags** throughout the catalogue! You can find a complete **overview of all “last chance” products** on page 12.





T-SHIRTS & MORE

Crew Necks & V-necks
Organic Crew Necks & V-necks 
Tank Tops
Long Sleeves
Polo Shirts
Underwear

p. 16 - 61




SWEATS

Sweatshirts
Sweat Hoodies
Recycled Sweat Hoodies 
Recycled Sweatpants 
Sweat Jackets

p. 62 - 73




SPORTS

Essentials
High-End
Recycled 

p. 74 - 105



JACKETS & FLEECE

Fleece Jackets & Vests
Recycled Fleece Jackets 
Softest Shell Jackets
Padded Jackets & Vests
Fashion Jackets

p. 106 - 125



Made of OCS-certified organic cotton



Made from recycled plastic bottles

BE KIND TO OUR PLANET

Sustainability focuses on meeting the needs of the present without compromising the ability of future generations to meet their needs.

Avoid the depletion of natural resources in order to **maintain an ecological balance.**

We pride ourselves in our ethical ways of business and believe it is **our part as global citizens to contribute to sustainable and ethically-minded production** for a minimal environmental impact.



Our organic styles are made of 100% OCS-certified organic ring-spun cotton; certified by Control Union Certifications (CU 819645).



Our textile articles and components have been tested for harmful substances and are therefore harmless for human health, assuring high product safety.



Our sustainable polyester made from recycled plastic bottles offers high-quality characteristics but with a smaller environmental footprint, keeping plastics from going to landfills and our oceans.



Member of amfori, the leading global business association for open and sustainable trade. We improve the social performance of our supply chain via amfori BSCI.



All our articles are subject to strict quality controls. With our own quality management team on site, we ensure that our high demands on material and product properties are always met.



SAVE THE OCEANS WITH US

Every year **more than 8 million metric tons of plastic waste** end up in our oceans killing millions of seabirds and other animals. **1 million plastic bottles** are bought worldwide every minute. Only **9% of the plastic** ever made **has been recycled**.

Our sustainable polyester made from recycled plastic bottles offers the same high-quality characteristics as conventional polyester but with a **smaller environmental footprint**.

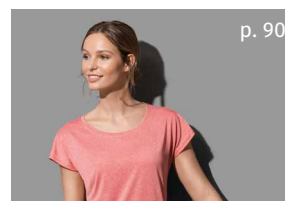
Furthermore, the production of recycled polyester requires far **less energy**, causes **significantly fewer CO₂ emissions**, and helps **to keep plastic waste from going to landfills and our oceans**.

Recycled Styles by Stedman®



p. 90

ST8830 Recycled Sports-T Move



p. 90

ST8930 Recycled Sports-T Move



p. 93

ST8840 Recycled Sports-T Reflect



p. 93

ST8940 Recycled Sports-T Reflect



p. 91

ST8850 Recycled Sports-T Race



p. 91

ST8950 Recycled Sports-T Race



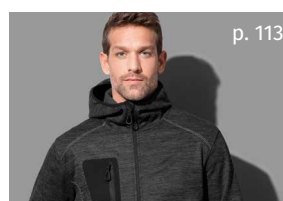
p. 95

ST5840 Recycled Scuba Jacket



p. 95

ST5940 Recycled Scuba Jacket



p. 113

ST5860 Recycled Fleece Jacket Hero



p. 113

ST5960 Recycled Fleece Jacket Hero



p. 68

ST5630 Recycled Unisex Sweat Hoodie



p. 69

ST5650 Recycled Unisex Sweatpants



For more information on our recycled collection please visit our website:

stedman.eu/recycled



1.5 MILLION PLASTIC BOTTLES

HAVE BEEN RECYCLED BY STEDMAN® SO FAR

HOW TO RECYCLE PLASTIC BOTTLES



PLASTIC BOTTLES



CRUSHING



CLEANING



MELTING



YARN



PRODUCT



CHOOSE ORGANIC COTTON

Organic cotton is **produced and certified according to the guidelines and standards of organic farming.**

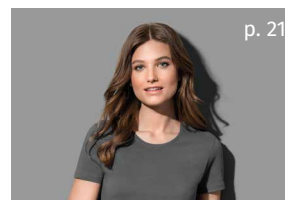
The cultivation of organic cotton preserves the **health of the soil, nature and people**, as only natural means and sustainable methods are used instead of artificial fertilizers and pesticides.

The use of toxic chemicals and genetically modified organisms (e.g. seeds) is prohibited. Instead, the cultivation of organic cotton combines tradition, innovation and science to **benefit the environment and promote a good quality of life for all.**

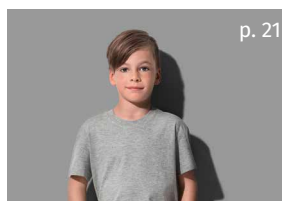
Organic Styles by Stedman®



ST2020 Classic-T Organic Unisex



ST2620 Classic-T Organic Fitted



ST2220 Classic-T Organic Kids



ST9370 Jamie Organic Kids



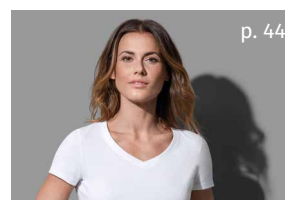
ST9200 James Organic Crew Neck



ST9300 Janet Organic Crew Neck



ST9210 James Organic V-neck



ST9310 Janet Organic V-neck



ST9220 Slub Organic



ST9320 Slub Organic

Our organic styles are made of 100% OCS-certified organic ring-spun cotton; certified by Control Union Certifications (CU 819645).



For more information on our organic collection please visit our website:

stedman.eu/organic





WHY ORGANIC?



46%

fewer CO₂ emissions



70%

less acidification
of land and water



91%

less surface and
groundwater use



62%

less energy
consumption



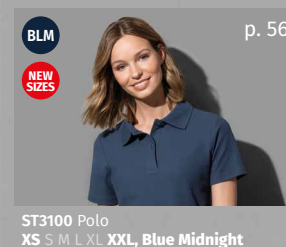
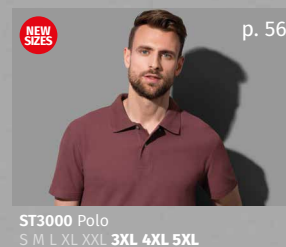
Stedman[®]
collection

WHAT'S NEW?

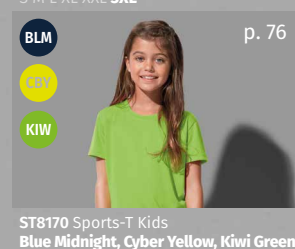
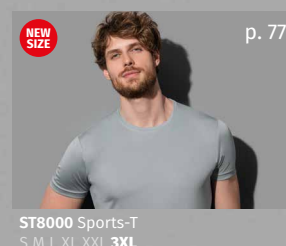
SIZES AND COLOURS

In response to numerous requests we have again **expanded our size and colour range** for some of our most popular promotional styles.

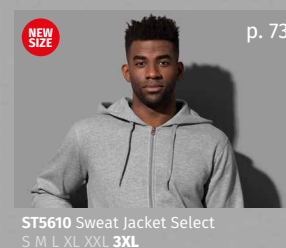
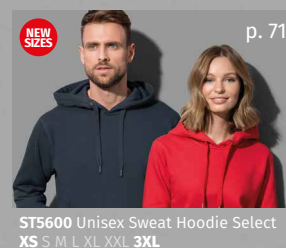
POLO SHIRTS



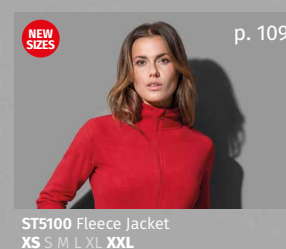
SPORTS



SWEATS



FLEECE



For more information on our new sizes and colours please visit our website:

stedman.eu/news



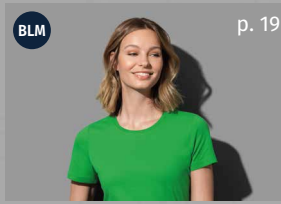
T-SHIRTS



NEW
SIZES

p. 20

ST2020 Classic-T Organic Unisex
XXS XS S M L XL XXL 3XL 4XL 5XL



BLM

p. 19

ST2600 Classic-T Fitted
Blue Midnight



NEW
SIZE

p. 27

ST9600 Clive Crew Neck
S M L XL XXL



NEW
SIZE

p. 27

ST9700 Claire Crew Neck
XS S M L XL



NEW
SIZE

p. 29

ST9020 Morgan Crew Neck
S M L XL XXL



NEW
SIZE

p. 29

ST9120 Megan Crew Neck
XS S M L XL



NEW
SIZE

p. 28

ST9000 Ben Crew Neck
S M L XL XXL 3XL



Get your 40% discount
on these
LAST CHANCE STYLES
while stocks last!

FASHION T-SHIRTS

ST9120 Megan Crew Neck
for women, p. 29

CRW

ST9500 Sharon Slub Crew Neck
for women, p. 35

PBL

BAH

ST9690 Dean Deep V-neck
for men, p. 42

GYH

ST9800 & ST9900 Luke & Lisa Crew Neck
for men & women, p. 33

GYH

CHH

NAH

AQH

PRH

CEH

PUH

ST9810 & ST9910 Luke & Lisa V-neck
for men & women, p. 45

GYH

CHH

NAH

AQH

PRH

CEH

PUH

ST9860 Luke Henley Long Sleeve
for men, p. 55

CHH

NAH

ORGANIC T-SHIRTS

ST9300 Janet Organic Crew Neck
for women, p. 31

LAP

ST9370 Jamie Organic Kids
for children, p. 30

INY

SPORTS T-SHIRTS

ST8000 & ST8100 Sports-T
for men & women, p. 77

DBY

ST8010 Sports Top
for men, p. 78

CBY

KIW

ST8410, ST8500 & ST8570 Active 140 Raglan
for men, women & children, p. 82-83

DLC

SWEATS, JACKETS & FLEECE

ST5100 Fleece Jacket
for women, p. 109

CUP

ST5170 Fleece Jacket Kids
for children, p. 108

BLM

HWB

KIW

SRE

ST5270 Quilted Blouson
for men, p. 125

BLO

ST5280 Pilot Jacket
for men, p. 125

BLO

ST5600 Unisex Sweat Hoodie Select
for men & women, p. 71

KIW

ST5700 Sweat Hoodie Select
for women, p. 70

BLO

CSR

DBY

ST5830 & ST5930 Performance Jacket
for men & women, p. 105

ASP

HOR

CAL

OCH

40% LAST CHANCE
DISCOUNT

LAST CHANCE!

This year, we offer a **40% discount** on selected styles and colours. Look out for our **red discount tags** throughout this catalogue!



For more information on our discounted styles please visit our website:

stedman.eu/lastchance



THE CLASSIC CHOICE

The Stedman® Classic-T collection is **made for the entire family**. Our high-quality ring-spun cotton styles are **significantly soft, durable and long-lasting**.

Classic-T's offer a comfortable basic shape and a **large colour palette**. Sizes for adults range from **XXS to 5XL**. Kids and toddlers are covered from **3XS to XL**.

This **popular bestseller** is not only available in **many fits and styles**, but also in **OCS-certified organic ring-spun cotton**.



17 **SIZES**
for kids & adults

3XS - XL
for kids & toddlers
.....
XXS - 5XL
for adults

8

CLASSIC STYLES



Classic-T
Crew Neck



Classic-T
Organic



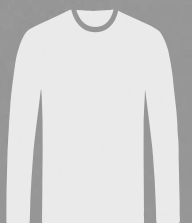
Classic-T
Fitted



Classic-T
V-neck



Classic
Tank Top



Classic-T
Long Sleeve



Classic
Polo

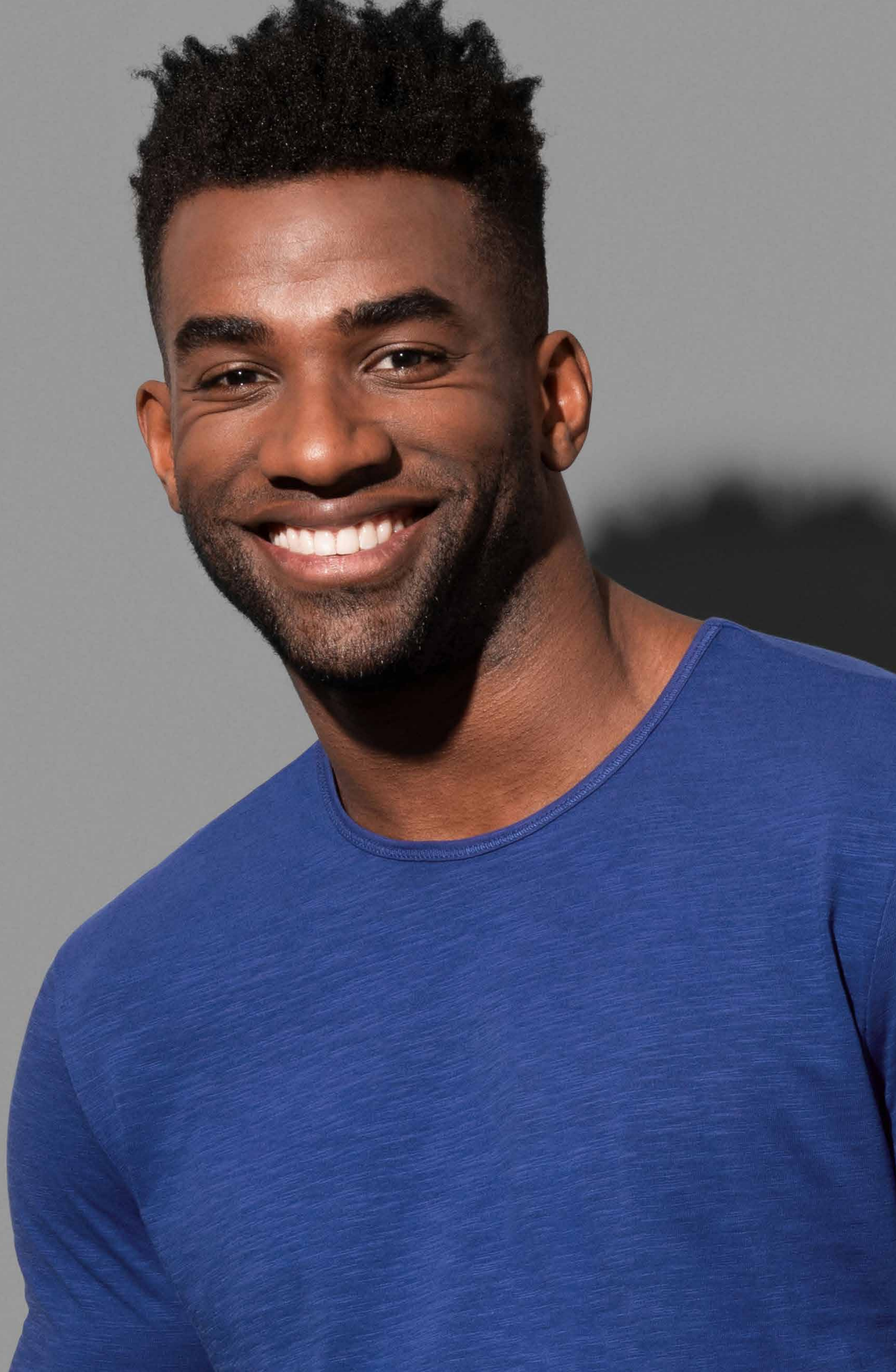


Classic Polo
Long Sleeve

24

CLASSIC COLOURS





T-SHIRTS & MORE by Stedman®

True must-haves for the promotional market: T-shirts, polo shirts, long sleeves and more, made of perfectly printable, high-quality fabrics.



Stedman®
collection



ST2000 MEN & WOMEN

Classic-T Unisex

SIZES

XXS XS S M L XL XXL 3XL 4XL 5XL

NORMAL FIT

FIT

FABRIC

155 g/m²

100% ring-spun cotton; single jersey (Grey Heather: 85% cotton, 15% viscose)

- ✓ UNISEX STYLE - GREAT FIT FOR MEN & WOMEN
 ✓ CLASSIC BESTSELLER
 ✓ HIGH-QUALITY RING-SPUN COTTON



Sizes 4-5XL only in: White, Black Opal, Ash, Grey Heather, Blue Midnight, Navy Blue, Bright Royal & Scarlet Red



Organic p. 20 · Body Fit p. 22 · V-neck p. 40 · Long sleeve p. 50

ST2600 WOMEN

Classic-T Fitted

SIZES XS S M L XL XXL 3XL**FIT** BODY FIT**FABRIC** 155 g/m²100% ring-spun cotton; single jersey
(Grey Heather: 85% cotton, 15% viscose)

- ✓ SIDE SEAMS
- ✓ CLASSIC BESTSELLER
- ✓ HIGH-QUALITY RING-SPUN COTTON

**NEW
COLOUR**

Size 3XL only in: White, Black Opal, Navy Blue & Scarlet Red



Organic p. 21



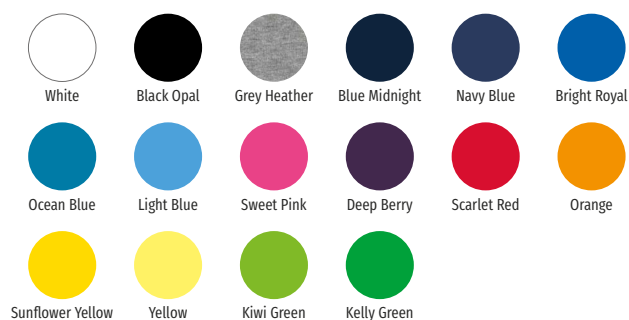
ST2200 CHILDREN

Classic-T Kids

SIZES	EU	3XS	XXS	XS	S	M	L	XL
AGE	1-2	3-4	5-6	7-8	9-10	11-12	12-13	
CM	86-92	98-104	110-116	122-128	134-140	146-152	158-164	

FIT NORMAL FIT**FABRIC** 155 g/m²100% ring-spun cotton; single jersey
(Grey Heather: 85% cotton, 15% viscose)

- ✓ LARGE SIZE RANGE FROM TODDLERS TO TEENAGERS
- ✓ CLASSIC BESTSELLER
- ✓ HIGH-QUALITY RING-SPUN COTTON



Sizes 3XS & XXS only in: White, Black Opal, Navy Blue, Bright Royal, Light Blue, Scarlet Red & Orange



Organic p. 21





NEW
SIZES

ST2020 MEN & WOMEN

Classic-T Organic Unisex

SIZES

XXS XS S M L XL XXL 3XL 4XL 5XL

NORMAL FIT

FIT

FABRIC

145 g/m²

100% OCS-certified organic ring-spun cotton; single jersey (Grey Heather: 85% cotton, 15% viscose)

- ✓ ECO-FRIENDLY COTTON (OCS-CERTIFIED)
- ✓ CLASSIC BESTSELLER
- ✓ UNISEX STYLE - GREAT FIT FOR MEN & WOMEN



White



Black Opal



Grey Heather



Real Grey



Navy Blue



Bright Royal



Scarlet Red



Kiwi Green

Sizes 4-5XL only in: White, Black Opal, Bright Royal, Grey Heather, Navy Blue & Scarlet Red



Non-Organic p. 18

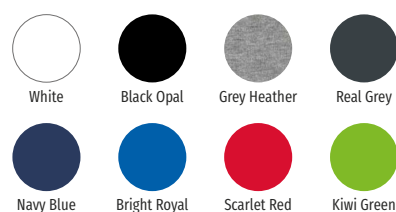
ST2620 WOMEN

Classic-T Organic Fitted

SIZES XS S M L XL**FIT** BODY FIT**FABRIC** 145 g/m²

100% OCS-certified organic ring-spun cotton; single jersey
(Grey Heather: 85% cotton, 15% viscose)

- ✓ **SIDE SEAMS**
- ✓ **ECO-FRIENDLY COTTON (OCS-CERTIFIED)**
- ✓ **CLASSIC BESTSELLER**



Non-Organic p. 19



ST2220 CHILDREN

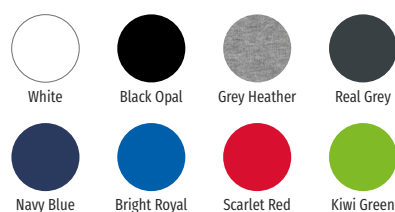
Classic-T Organic Kids

SIZES	EU	XS	S	M	L	XL
AGE	5-6	7-8	9-10	11-12	12-13	
CM	110-116	122-128	134-140	146-152	158-164	

FIT NORMAL FIT**FABRIC** 145 g/m²

100% OCS-certified organic ring-spun cotton; single jersey
(Grey Heather: 85% cotton, 15% viscose)

- ✓ **ECO-FRIENDLY COTTON (OCS-CERTIFIED)**
- ✓ **CLASSIC BESTSELLER**
- ✓ **DURABLE FABRIC**



Non-Organic p. 19





ST2010 MEN
Classic-T Fitted

SIZES

S M L XL XXL

BODY FIT

FIT

FABRIC

155 g/m²

100% ring-spun cotton; single jersey (Grey Heather: 85% cotton, 15% viscose)

✓ **BODY-FIT SHAPE** ✓ **CLASSIC BESTSELLER** ✓ **HIGH-QUALITY RING-SPUN COTTON**



White



Black Opal



Grey Heather



Deep Berry



Navy Blue



Bright Royal



Scarlet Red



Kiwi Green



Normal Fit p. 18



ST2100 MEN

Comfort-T 185

SIZES	S M L XL XXL 3XL 4XL 5XL
FIT	NORMAL FIT

ST2160 WOMEN

Comfort-T 185

SIZES	S M L XL XXL
FIT	NORMAL FIT

FABRIC
185 g/m²

100% ring-spun cotton; single jersey (Grey Heather: 85% cotton, 15% viscose)

- ✓ HEAVYWEIGHT RING-SPUN COTTON
- ✓ DURABLE FABRIC
- ✓ REGULAR SHAPE



Men's sizes 4-5XL only in: White, Black Opal & Navy Blue



Long sleeve p. 50



Lightweight
**BEST
BUY**
by Stedman®



N1000 MEN

Nano

SIZES	S M L XL XXL
FIT	NORMAL FIT

N1100 WOMEN

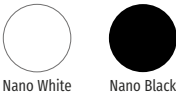
Nano

SIZES	S M L XL
FIT	NORMAL FIT

FABRIC
135 g/m²

100% ring-spun cotton; single jersey

- ✓ LIGHTWEIGHT RING-SPUN COTTON ✓ BASIC PRICE FIGHTER ✓ NO LABEL IN COLLAR



Nano White Nano Black



ST9630 MEN

Clive Relaxed

SIZES	S M L XL XXL
FIT	NORMAL FIT

ST9730 WOMEN

Claire Relaxed

SIZES	XS S M L XL
FIT	NORMAL FIT

FABRIC
170 g/m²

95% ring-spun combed cotton, 5% elastane; single jersey "full feeder" (Grey Heather: 82% cotton, 14% viscose, 4% elastane)

- ✓ NORMAL FIT
- ✓ STRETCHY, COMBED COTTON WITH ELASTANE
- ✓ NO LABEL IN COLLAR



White



Black Opal



Grey Heather



Marina Blue



Bright Royal



Scarlet Red



Salmon



Dark Chocolate

NEW
SIZENEW
SIZE

ST9600 MEN

Clive Crew Neck

SIZES S M L XL **XXL**

FIT BODY FIT

ST9700 WOMEN

Claire Crew Neck

XS S M L XL

SIZES

BODY FIT

FIT

FABRIC

170 g/m²

95% ring-spun combed cotton, 5% elastane; single jersey "full feeder" (Grey Heather: 82% cotton, 14% viscose, 4% elastane)

✓ BODY FIT ✓ STRETCHY, COMBED COTTON WITH ELASTANE ✓ NO LABEL IN COLLAR



White



Black Opal



Powder Grey



Soft Grey



Grey Heather



Marina Blue



Denim Blue



Powder Blue



Bordeaux



Salmon



Dark Chocolate



Slate Grey



King Blue



Cupcake Pink

Men's size XXL only in: White, Black Opal, Soft Grey, Grey Heather, Denim Blue, Salmon, Dark Chocolate, Slate Grey & Marina Blue · Women's size XS only in: White, Black Opal & Marina Blue



V-neck p. 43 · Long sleeve p. 52



NEW
SIZE

ST9000 MEN

Ben Crew Neck

SIZES

S M L XL XXL **3XL**

NORMAL FIT

FIT

FABRIC

160 g/m²

100% ring-spun cotton; single jersey (Grey Heather: 85% cotton, 15% viscose)

- ✓ PREMIUM RING-SPUN COTTON
- ✓ REGULAR CUT WITH RIB COLLAR
- ✓ SIDE SEAMS
- ✓ NO LABEL IN COLLAR



White



Cream White



Black Opal



Grey Heather



Slate Grey



Marina Blue



King Blue



Hawaii Blue



Deep Lilac



Crimson Red



Pumpkin



Daisy Yellow



Green Flash



Military Green

Size 3XL only in: White, Black Opal & Marina Blue



V-neck p. 41

ST9020 MEN

Morgan Crew Neck

SIZES S M L XL **XXL****FIT** BODY FIT**FABRIC** 160 g/m²100% ring-spun cotton; single jersey
(Grey Heather: 85% cotton, 15% viscose)

- ✓ PREMIUM RING-SPUN COTTON
- ✓ BODY-FIT CUT WITH RIB COLLAR
- ✓ SIDE SEAMS
- ✓ NO LABEL IN COLLAR



White



Cream White



Black Opal



Grey Heather



Slate Grey



Marina Blue



King Blue



Hawaii Blue



Deep Lilac



Crimson Red



Pumpkin



Daisy Yellow



Green Flash



Military Green

Size XXL only in: White, Black Opal, Crimson Red, Grey Heather, King Blue, Marina Blue, Military Green & Slate Grey



Long sleeve p. 51

**NEW
SIZE**

ST9120 WOMEN

Megan Crew Neck

SIZES **XS** S M L XL**FIT** BODY FIT**FABRIC** 145 g/m²100% ring-spun combed cotton; single jersey
(Grey Heather: 85% cotton, 15% viscose)

- ✓ HIGH-QUALITY COMBED COTTON
- ✓ BODY-FIT CUT WITH SLIM RIB COLLAR
- ✓ NO LABEL IN COLLAR



White



Black Opal



Grey Heather



Marina Blue



Crimson Red



Pumpkin



Cupcake Pink



Cream White

Size XS only in: White, Black Opal & Marina Blue



V-neck p. 41

**NEW
SIZE**



Organic Cotton

Our super soft organic T-shirts are made of 100% OCS-certified organic cotton, grown without the use of toxic and persistent pesticides and fertilizers.



ST9370 CHILDREN

Jamie Organic Kids

SIZES		EU	S	M	L	XL
AGE			7-8	9-10	11-12	12-13
CM			122-128	134-140	146-152	158-164

FIT NORMAL FIT

FABRIC 155 g/m²

100% OCS-certified organic ring-spun combed cotton; single jersey

- ✓ ECO-FRIENDLY COMBED COTTON (OCS-CERTIFIED)
- ✓ SIDE SEAMS
- ✓ NO LABEL IN COLLAR



White



Black Opal



Pepper Red



Lavender Purple



Indian Yellow





ST9200 MEN

James Organic Crew Neck

SIZES	S M L XL XXL
FIT	NORMAL FIT

ST9300 WOMEN

Janet Organic Crew Neck

SIZES	S M L XL
FIT	NORMAL FIT

FABRIC
155 g/m²

100% OCS-certified organic ring-spun combed cotton; single jersey

- ✓ ECO-FRIENDLY COMBED COTTON (OCS-CERTIFIED)
- ✓ SIDE SEAMS
- ✓ NO LABEL IN COLLAR



White



Winter White



Black Opal



Soft Grey



Denim Blue



Pepper Red



Indian Yellow



Earth Green



Frosted Blue



Pacific Blue



Lavender Purple



V-neck p. 44



ST9100 MEN

Finest Cotton-T

SIZES	S M L XL
FIT	NORMAL FIT

ST9110 WOMEN

Finest Cotton-T

S M L XL	SIZES
BODY FIT	FIT

FABRIC
105 g/m²

100% ring-spun combed cotton; single jersey

- ✓ FINE, SOFT & STRETCHY COMBED COTTON
- ✓ ROLLED SELF-FABRIC COLLAR
- ✓ NO LABEL IN COLLAR



White



Black Opal



Slate Grey



Marina Blue



Crimson Red



ST9800 MEN

Luke Crew Neck

SIZES	S M L XL XXL
FIT	NORMAL FIT

ST9900 WOMEN

Lisa Crew Neck

SIZES	S M L XL
FIT	NORMAL FIT

FABRIC
145 g/m²

60% ring-spun combed cotton, 40% polyester; melange, single jersey

- ✓ SOFT, BLENDED COMBED COTTON
- ✓ MODERN MELANGE COLOURS
- ✓ NO LABEL IN COLLAR





Beautiful
**SLUB
YARN**
by Stedman®



ST9400 MEN

Shawn Slub Crew Neck

SIZES	S M L XL XXL
FIT	NORMAL FIT

ST9500 WOMEN

Sharon Slub Crew Neck

S M L XL	SIZES
NORMAL FIT	FIT

FABRIC
140 g/m²

100% ring-spun cotton, slub yarn; single jersey

- ✓ SLUB YARN FOR A TEXTURISED LOOK
- ✓ SLIM, MODERN COLLAR
- ✓ NO LABEL IN COLLAR



White



Black Opal



Powder Grey



True Blue



Powder Blue



Crimson Red



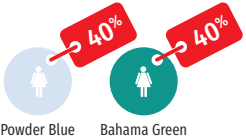
Bahama Green



Slate Grey



V-neck p. 47



Powder Blue

Bahama Green



ST9430 MEN

Shawn Henley T-shirt

SIZES

S M L XL XXL

FIT

NORMAL FIT

FABRIC

140 g/m²

100% ring-spun cotton, slub yarn; single jersey

ST9530 WOMEN

Sharon Henley T-shirt

S M L XL

SIZES

NORMAL FIT

FIT

- ✓ SLUB YARN FOR A TEXTURED LOOK
- ✓ METAL BUTTONS
- ✓ NO LABEL IN COLLAR



White



Black Opal



Slate Grey



Long sleeve p. 54



ST9220 MEN

Slub Organic

SIZES	S M L XL XXL
FIT	NORMAL FIT

ST9320 WOMEN

Slub Organic

S M L XL	SIZES
NORMAL FIT	FIT

FABRIC
130 g/m²

100% OCS-certified organic ring-spun cotton, slub yarn; single jersey

- ✓ ECO-FRIENDLY COTTON (OCS-CERTIFIED)
- ✓ SLUB YARN FOR A TEXTURISED LOOK
- ✓ NO LABEL IN COLLAR





ST9450 MEN

Shawn Oversized Slub

SIZES	S M L XL XXL
FIT	OVERSIZED FIT

FABRIC
140 g/m ²

100% ring-spun cotton, slub yarn; single jersey

ST9550 WOMEN

Sharon Oversized Slub

S M L XL	SIZES
OVERSIZED FIT	FIT

- ✓ SLUB YARN FOR A TEXTURISED LOOK
- ✓ RAW EDGE COLLAR AND OVERSIZED SHAPE
- ✓ NO LABEL IN COLLAR



White



Black Opal



Powder Grey



Powder Blue



Powder Rose



Powder Green



ST9850 MEN

David Oversized

SIZES

S M L XL XXL

FIT

OVERSIZED FIT

FABRIC

140 g/m²

65% polyester, 35% viscose; melange, single jersey

ST9950 WOMEN

Daisy Oversized

S M L XL

SIZES

OVERSIZED FIT

FIT

- ✓ SUPER SOFT AND SILKY FABRIC WITH VISCOSE
- ✓ MODERN OVERSIZED FIT
- ✓ RAW EDGE COLLAR
- ✓ NO LABEL IN COLLAR



Vintage Grey



Vintage Blue



Vintage Rose



Vintage Brown



ST2300 MEN

Classic-T V-neck

SIZES	S M L XL XXL
FIT	NORMAL FIT

ST2700 WOMEN

Classic-T V-neck

S M L XL XXL	SIZES
NORMAL FIT	FIT

FABRIC

155 g/m²

100% ring-spun cotton; single jersey (Grey Heather: 85% cotton, 15% viscose)

- ✓ CLASSIC BESTSELLER
- ✓ HIGH-QUALITY RING-SPUN COTTON
- ✓ NORMAL FIT


 White


 Black Opal


 Grey Heather


 Navy Blue


 Bright Royal


 Ocean Blue


 Deep Berry


 Scarlet Red


 Yellow


 Kiwi Green


 Blue Midnight


 Orange


 Bottle Green


 Light Blue


 Sweet Pink

Women's size XXL only in: White, Black Opal, Navy Blue & Scarlet Red



Crew neck p. 18 · Long sleeve p. 50

ST9010 MEN

Ben V-neck**SIZES** S M L XL XXL**FIT** NORMAL FIT**FABRIC** 160 g/m²

100% ring-spun cotton; single jersey
(Grey Heather: 85% cotton, 15% viscose)

- ✓ PREMIUM RING-SPUN COTTON
- ✓ REGULAR CUT WITH RIB COLLAR
- ✓ NO LABEL IN COLLAR



White



Black Opal



Grey Heather



Marina Blue



Deep Lilac



Crimson Red



Daisy Yellow



Green Flash



Slate Grey



King Blue



Hawaii Blue



Military Green



Crew neck p. 28



ST9130 WOMEN

Megan V-neck**SIZES** S M L XL**FIT** BODY FIT**FABRIC** 145 g/m²

100% ring-spun combed cotton; single jersey
(Grey Heather: 85% cotton, 15% viscose)

- ✓ HIGH-QUALITY COMBED COTTON
- ✓ BODY-FIT CUT WITH SLIM RIB COLLAR
- ✓ NO LABEL IN COLLAR



White



Black Opal



Grey Heather



Marina Blue



Deep Lilac



Crimson Red



Daisy Yellow



Green Flash



Cupcake Pink



Crew neck p. 29



ST9690 MEN

Dean Deep V-neck

SIZES

S M L XL XXL

BODY FIT

FIT

FABRIC

170 g/m²

95% ring-spun combed cotton, 5% elastane; single jersey "full feeder" (Grey Heather: 82% cotton, 14% viscose, 4% elastane)

- ✓ STRETCHY, COMBED COTTON WITH ELASTANE
- ✓ PERFECT AS UNDERSHIRT
- ✓ BODY-FIT SHAPE
- ✓ NO LABEL IN COLLAR



White



Black Opal



Grey Heather





ST9610 MEN

Clive V-neck

SIZES

S M L XL XXL

FIT

BODY FIT

FABRIC

170 g/m²

95% ring-spun combed cotton, 5% elastane; single jersey "full feeder" (Grey Heather: 82% cotton, 14% viscose, 4% elastane)

✓ **STRETCHY, COMBED COTTON WITH ELASTANE**✓ **BODY-FIT SHAPE**✓ **NO LABEL IN COLLAR**

ST9710 WOMEN

Claire V-neck

S M L XL

SIZES

BODY FIT

FIT



White



Black Opal



Grey Heather



Marina Blue



Slate Grey



King Blue



Cupcake Pink

Men's size XXL only in: White, Black Opal, Grey Heather & Slate Grey



Crew neck p. 27 · Long sleeve p. 52



ORGANIC
COTTON



ST9210 MEN

James Organic V-neck

SIZES

S M L XL XXL

FIT

NORMAL FIT

FABRIC

155 g/m²

100% OCS-certified organic ring-spun combed cotton; single jersey

ST9310 WOMEN

Janet Organic V-neck

S M L XL

SIZES

NORMAL FIT

FIT

- ✓ ECO-FRIENDLY COMBED COTTON (OCS-CERTIFIED)
- ✓ RIB COLLAR WITH ELASTANE
- ✓ NO LABEL IN COLLAR



White



Winter White



Black Opal



Pepper Red



Indian Yellow



Earth Green



Frosted Blue



Pacific Blue



Lavender Purple



Crew neck p. 31



ST9810 MEN

Luke V-neck

SIZES	S M L XL XXL
FIT	NORMAL FIT

ST9910 WOMEN

Lisa V-neck

SIZES	S M L XL
FIT	NORMAL FIT

FABRIC
145 g/m²

60% ring-spun combed cotton, 40% polyester; melange, single jersey

- ✓ SOFT, BLENDED COMBED COTTON
- ✓ MODERN MELANGE COLOURS
- ✓ NO LABEL IN COLLAR



Crew neck p. 33



Fashionable

**SLUB
YARN**

by Stedman®



ST9410 MEN

Shawn Slub V-neck

SIZES	S M L XL XXL
FIT	NORMAL FIT

ST9510 WOMEN

Sharon Slub V-neck

S M L XL	SIZES
NORMAL FIT	FIT

FABRIC
140 g/m²

100% ring-spun cotton, slub yarn; single jersey

- ✓ SLUB YARN FOR A TEXTURISED LOOK
- ✓ SLIM, MODERN COLLAR
- ✓ NO LABEL IN COLLAR



White



Black Opal



True Blue



Crimson Red



Bahama Green



Slate Grey



Crew neck p. 35



ST2800 MEN

Classic Tank Top

SIZES	S M L XL XXL
FIT	NORMAL FIT

ST2900 WOMEN

Classic Tank Top

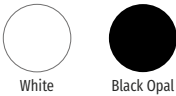
S M L XL	SIZES
NORMAL FIT	FIT

FABRIC

155 g/m²

100% ring-spun cotton; single jersey

- ✓ HIGH-QUALITY RING-SPUN COTTON
 ✓ REGULAR SHAPE
- ✓ COLLAR WITH RIB BINDING





ST2810 MEN
Tank Top

SIZES S M L XL XXL **BODY FIT** **FIT**

FABRIC
160 g/m²

100% ring-spun cotton; single jersey (Grey Heather: 85% cotton, 15% viscose)

- ✓ PREMIUM RING-SPUN COTTON
- ✓ MODERN, BODY-FIT SHAPE
- ✓ NO LABEL IN COLLAR, TEAR-AWAY LABEL IN SIDE SEAM





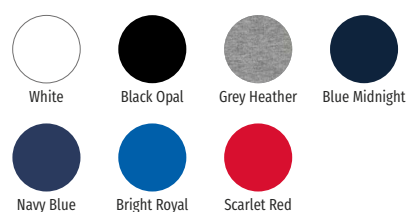
ST2500 MEN

Classic-T Long Sleeve

SIZES	S M L XL XXL
FIT	NORMAL FIT
FABRIC	155 g/m²

100% ring-spun cotton; single jersey
(Grey Heather: 85% cotton, 15% viscose)

- ✓ **CLASSIC BESTSELLER**
- ✓ **HIGH-QUALITY RING-SPUN COTTON**
- ✓ **REGULAR SHAPE**



Short sleeve crew neck p. 18
Short sleeve V-neck p. 40

ST2130 MEN

Comfort-T 185 Long Sleeve

SIZES	S M L XL XXL
FIT	NORMAL FIT
FABRIC	185 g/m²

100% ring-spun cotton; single jersey
(Grey Heather: 85% cotton, 15% viscose)

- ✓ **DURABLE FABRIC**
- ✓ **REGULAR SHAPE**
- ✓ **HEAVYWEIGHT RING-SPUN COTTON**



Short sleeve p. 23





ST9040 MEN

Morgan Long Sleeve

SIZES S M L XL**BODY FIT** **FIT****FABRIC****160 g/m²**

100% ring-spun cotton; single jersey

✓ PREMIUM RING-SPUN COTTON ✓ BODY-FIT CUT WITH RIB COLLAR ✓ NO LABEL IN COLLAR



White



Black Opal



Slate Grey



Marina Blue



Short sleeve p. 29



ST9620 MEN

Clive Long Sleeve

SIZES	S M L XL XXL
FIT	BODY FIT
FABRIC	170 g/m²

95% ring-spun combed cotton,
5% elastane; single jersey "full feeder"
(Grey Heather: 82% cotton, 14% viscose, 4% elastane)

- ✓ **STRETCHY, COMBED COTTON WITH ELASTANE**
- ✓ **BODY-FIT SHAPE**
- ✓ **NO LABEL IN COLLAR**



White



Black Opal



Grey Heather



Slate Grey



Short sleeve crew neck p. 27
Short sleeve V-neck p. 43



ST9720 WOMEN

Claire V-neck Long Sleeve

SIZES	S M L XL
FIT	BODY FIT
FABRIC	170 g/m²

95% ring-spun combed cotton,
5% elastane; single jersey "full feeder"
(Grey Heather: 82% cotton, 14% viscose, 4% elastane)

- ✓ **STRETCHY, COMBED COTTON WITH ELASTANE**
- ✓ **BODY-FIT SHAPE**
- ✓ **NO LABEL IN COLLAR**



White



Black Opal



Grey Heather



Marina Blue



Cupcake Pink



Short sleeve crew neck p. 27
Short sleeve V-neck p. 43



ST9080 MEN

Knit Long Sleeve

SIZES

S M L XL XXL

FIT

NORMAL FIT

FABRIC

210 g/m²

58% polyester, 37% viscose, 5% elastane

ST9180 WOMEN

Knit Long Sleeve

S M L XL

SIZES

NORMAL FIT

FIT

- ✓ SOFT KNIT FABRIC WITH VISCOSE
- ✓ FASHIONABLE LOOSE SHAPE
- ✓ NO LABEL IN COLLAR

Light Grey
MelangeDark Grey
MelangeMarina Blue
Melange



ST9460 MEN

Shawn Henley Long Sleeve

SIZES	S M L XL XXL
FIT	NORMAL FIT

ST9580 WOMEN

Sharon Henley Long Sleeve

S M L XL	SIZES
NORMAL FIT	FIT

FABRIC
140 g/m²

100% ring-spun cotton, slub yarn; single jersey

- ✓ SLUB YARN FOR A TEXTURED LOOK
- ✓ METAL BUTTONS
- ✓ NO LABEL IN COLLAR



White



Black Opal



Slate Grey



Short sleeve p. 36



ST9860 MEN

Luke Henley Long Sleeve

SIZES

S M L XL XXL

NORMAL FIT

FIT

FABRIC

160 g/m²

60% ring-spun combed cotton, 40% polyester; melange, single jersey

✓ SOFT, BLENDED COMBED COTTON ✓ LAYER-LOOK ✓ METAL BUTTONS ✓ NO LABEL IN COLLAR

Charcoal
HeatherNavy
Heather



**NEW
SIZES**

**NEW
COLOUR**

**NEW
SIZES**

ST3000 MEN

Polo

SIZES S M L XL XXL **3XL 4XL 5XL**
FIT NORMAL FIT

ST3100 WOMEN

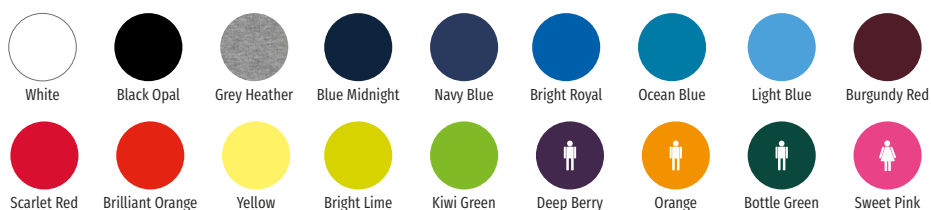
Polo

XS S M L XL XXL **SIZES**
FIT NORMAL FIT

FABRIC
170 g/m²

100% ring-spun cotton; single jersey, piqué look (Grey Heather: 85% cotton, 15% viscose)

✓ **SOFT SINGLE JERSEY COTTON WITH PIQUÉ LOOK** ✓ **RIB COLLAR** ✓ **CLASSIC BESTSELLER**



Men's sizes 3-5XL only in: White, Black Opal, Blue Midnight, Bright Royal, Grey Heather, Navy Blue & Scarlet Red · Women's sizes XS & XXL only in: White, Black Opal, Blue Midnight, Bright Royal, Grey Heather, Navy Blue & Scarlet Red

ST3200 CHILDREN

Polo Kids

SIZES	EU	XS	S	M	L	XL
AGE	5-6	7-8	9-10	11-12	12-13	
CM	110-116	122-128	134-140	146-152	158-164	

FIT	NORMAL FIT
-----	------------

FABRIC	170 g/m ²
--------	----------------------

100% ring-spun cotton; single jersey, piqué look
(Grey Heather: 85% cotton, 15% viscose)

- ✓ SOFT SINGLE JERSEY COTTON WITH PIQUÉ LOOK
- ✓ RIB COLLAR
- ✓ CLASSIC BESTSELLER



White



Black Opal



Grey Heather



Navy Blue



Bright Royal



Scarlet Red



ST3400 MEN

Polo Long Sleeve

SIZES	S M L XL XXL
-------	--------------

FIT	NORMAL FIT
-----	------------

FABRIC	170 g/m ²
--------	----------------------

100% ring-spun cotton; single jersey, piqué look
(Grey Heather: 85% cotton, 15% viscose)

- ✓ SOFT SINGLE JERSEY COTTON WITH PIQUÉ LOOK
- ✓ RIB COLLAR
- ✓ CLASSIC BESTSELLER



White



Black Opal



Grey Heather



Navy Blue





ST9050 MEN

Henry Polo

SIZES

S M L XL XXL

NORMAL FIT

FIT

FABRIC

225 g/m²

100% ring-spun combed cotton; true piqué

✓ HEAVYWEIGHT PREMIUM COMBED COTTON PIQUÉ

✓ RIB COLLAR AND SIDE SEAM SLITS

✓ NO LABEL IN COLLAR



White



Black Opal



Slate Grey



Marina Blue



True Blue



Crimson Red



Bahama Green



ST9060 MEN

Harper Polo

SIZES	S M L XL XXL
FIT	NORMAL FIT
FABRIC	180 g/m ²

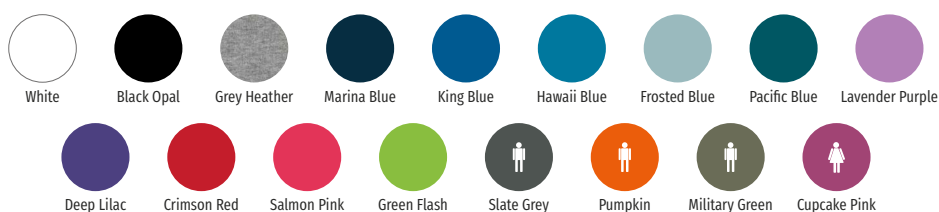
ST9150 WOMEN

Hanna Polo

SIZES	S M L XL
FIT	NORMAL FIT
FABRIC	170 g/m ²

100% ring-spun combed cotton; true piqué (Grey Heather: 85% cotton, 15% viscose)

- ✓ PREMIUM COMBED COTTON PIQUÉ
- ✓ RIB COLLAR
- ✓ NO LABEL IN COLLAR



A full-page photograph of a muscular Black man from the back, wearing white briefs. He is standing against a light gray background with dramatic lighting that creates strong shadows. His right hand is resting on the wall behind him. A dark horizontal bar is positioned across the middle of the image, containing the word 'UNDERWEAR' in white capital letters.

UNDERWEAR

ST9692 MEN

Dexter Briefs

SIZES	S M L XL XXL
FIT	BODY FIT
FABRIC	195 g/m²

92% ring-spun combed cotton, 8% elastane;
single jersey “full feeder”

- ✓ **STRETCHY, COMBED COTTON WITH ELASTANE**
- ✓ **ELASTIC WAISTBAND**
- ✓ **2-PACK**



White



Black Opal



ST9691 MEN

Dexter Boxers

SIZES	S M L XL XXL
FIT	BODY FIT
FABRIC	195 g/m²

92% ring-spun combed cotton, 8% elastane;
single jersey “full feeder”

- ✓ **STRETCHY, COMBED COTTON WITH ELASTANE**
- ✓ **ELASTIC WAISTBAND**
- ✓ **2-PACK**



White



Black Opal





SWEATS by Stedman®

The perfect choice for athletic as well as casual outfits: sweatshirts, hoodies, sweat jackets and -pants, made of soft, high-quality cotton-blends and recycled materials.



Stedman®
collection



ST5620 MEN

Sweatshirt Select

SIZES

S M L XL XXL

NORMAL FIT

FIT

FABRIC

280 g/m²

80% ring-spun cotton, 20% polyester (Grey Heather: 70% cotton, 30% polyester)

- ✓ SOFT COTTON-BLEND
- ✓ 100% COTTON SURFACE
- ✓ MODERN, SPORTY DESIGN WITH SIDE PANELS
- ✓ BRUSHED INSIDE
- ✓ NO LABEL IN COLLAR



Black Opal



Grey Heather



Slate Grey



Blue Midnight



Hawaii Blue



Crimson Red



Kiwi Green



ST4000 MEN & WOMEN

Unisex Sweatshirt Classic

SIZES

XS S M L XL XXL 3XL

NORMAL FIT

FIT

FABRIC

280 g/m²

80% ring-spun cotton, 20% polyester (Grey Heather: 70% cotton, 20% polyester, 10% viscose)

- ✓ DURABLE COTTON-BLEND
- ✓ 100% COTTON SURFACE
- ✓ BRUSHED INSIDE
- ✓ UNISEX STYLE - GREAT FIT FOR MEN & WOMEN



White



Black Opal



Grey Heather



Real Grey



Navy Blue



Bright Royal



Scarlet Red



ST4200 MEN & WOMEN

Unisex Sweat Hoodie Light

SIZES

XS S M L XL XXL 3XL 4XL

NORMAL FIT

FIT

FABRIC

190 g/m²

100% ring-spun cotton

- ✓ **LIGHTWEIGHT RING-SPUN COTTON**
- ✓ **UNISEX STYLE - GREAT FIT FOR MEN & WOMEN**
- ✓ **BRUSHED INSIDE**
- ✓ **NO LABEL IN COLLAR**



Black Opal



Real Grey



Navy Blue



Bright Royal



Ocean Blue



Sweet Pink



Deep Berry



Scarlet Red



Orange



Kiwi Green

Sizes 3-4XL only in: Black Opal, Real Grey & Navy Blue



ST4100 MEN

Sweat Hoodie Classic

SIZES	S M L XL XXL 3XL
FIT	NORMAL FIT

ST4110 WOMEN

Sweat Hoodie Classic

SIZES	S M L XL
FIT	NORMAL FIT

FABRIC
280 g/m²

80% ring-spun cotton, 20% polyester (Grey Heather: 70% cotton, 20% polyester, 10% viscose)

- ✓ DURABLE COTTON-BLEND
- ✓ 100% COTTON SURFACE
- ✓ BRUSHED INSIDE



White



Black Opal



Grey Heather



Navy Blue



Bright Royal



Scarlet Red



ST5630 MEN & WOMEN

Recycled Unisex Sweat Hoodie

SIZES XS S M L XL XXL 3XL

NORMAL FIT

FIT

FABRIC

280 g/m²

80% ring-spun cotton, 20% recycled polyester (Grey Heather: 70% cotton, 30% recycled polyester)

- ✓ ECO-FRIENDLY MATERIAL MADE FROM 6 RECYCLED PLASTIC BOTTLES
- ✓ 100% COTTON SURFACE
- ✓ NO LABEL IN COLLAR, TEAR-AWAY LABEL IN SIDE SEAM
- ✓ BRUSHED INSIDE
- ✓ UNISEX STYLE - GREAT FIT FOR MEN & WOMEN



Black Opal



Grey Heather



Blue Midnight



Made from 6 recycled plastic bottles.



ST5650 MEN & WOMEN

Recycled Unisex Sweatpants

SIZES

XS S M L XL XXL

NORMAL FIT

FIT

FABRIC

280 g/m²

80% ring-spun cotton, 20% recycled polyester (Grey Heather: 70% cotton, 30% recycled polyester)

- ✓ ECO-FRIENDLY MATERIAL MADE FROM 6 RECYCLED PLASTIC BOTTLES
- ✓ 100% COTTON SURFACE
- ✓ TEAR-AWAY LABEL IN WAISTBAND
- ✓ BRUSHED INSIDE
- ✓ UNISEX STYLE - GREAT FIT FOR MEN & WOMEN



Black Opal



Grey Heather



Blue Midnight



Made from 6 recycled plastic bottles.

You asked for

MORE SIZES.

We listened.

Our Sweat Hoodie Select is now also available as unisex style for men and women from XS to 3XL.

ST5700 WOMEN

Sweat Hoodie Select

SIZES	S M L XL
FIT	NORMAL FIT
FABRIC	280 g/m ²

80% ring-spun cotton, 20% polyester

- ✓ SOFT COTTON-BLEND
- ✓ 100% COTTON SURFACE
- ✓ BRUSHED INSIDE
- ✓ NO LABEL IN COLLAR



Black Opal



Crimson Red



Deep Berry



NEW
SIZES

ST5600 MEN & WOMEN

Unisex Sweat Hoodie Select

SIZES

XS S M L XL XXL 3XL

NORMAL FIT

FIT

FABRIC

280 g/m²

80% ring-spun cotton, 20% polyester (Grey Heather: 70% cotton, 30% polyester)

- ✓ SOFT COTTON-BLEND
- ✓ 100% COTTON SURFACE
- ✓ BRUSHED INSIDE
- ✓ NO LABEL IN COLLAR
- ✓ UNISEX STYLE - GREAT FIT FOR MEN & WOMEN



Black Opal



Grey Heather



Slate Grey



Blue Midnight



Hawaii Blue



Crimson Red



Kiwi Green



Sizes XS & 3XL only in: Black Opal, Grey Heather, Slate Grey & Blue Midnight

Durable & soft

SWEAT FABRIC

by Stedman®

NEW
SIZE

ST5610 MEN

Sweat Jacket Select

SIZES	S M L XL XXL 3XL
FIT	NORMAL FIT

FABRIC

280 g/m²

80% ring-spun cotton, 20% polyester (Grey Heather: 70% cotton, 30% polyester)

- ✓ SOFT COTTON-BLEND
- ✓ 100% COTTON SURFACE
- ✓ BRUSHED INSIDE
- ✓ MODERN DESIGN WITH ZIPPER AND METAL PULLER
- ✓ NO LABEL IN COLLAR

ST5710 WOMEN

Sweat Jacket Select

S M L XL	SIZES
NORMAL FIT	FIT



Black Opal



Grey Heather



Blue Midnight



Hawaii Blue



Crimson Red



Sweet Pink



Deep Berry

Men's size 3XL only in: Black Opal, Blue Midnight & Grey Heather



SPORTS ESSENTIALS

by Stedman®

Fantastic for sportive indoor and outdoor activities. Essential everyday workout clothes made of high-quality, moisture-wicking functional fabrics.



Stedman®
collection

You asked for

MORE SIZES.

We listened.

More sizes for men and women in our bestselling workout line. Kids get 3 additional sporty colours.



ST8170 CHILDREN

Sports-T Kids

SIZES	EU	S	M	L	XL
AGE	7-8	9-10	11-12	12-13	
CM	122-128	134-140	146-152	158-164	

FIT NORMAL FIT

FABRIC 140 g/m²

100% ACTIVE-DRY® polyester; interlock

- ✓ TIGHT KNIT, ELASTIC FABRIC WITH SLEEK SURFACE
- ✓ QUICK-DRYING AND MOISTURE-WICKING
- ✓ NO LABEL IN COLLAR, TEAR-AWAY LABEL IN SIDE SEAM

NEW
COLOUR

NEW
COLOUR

NEW
COLOUR



White



Black Opal



Blue Midnight



Hawaii Blue



Crimson Red



Cyber Orange



Cyber Yellow



Kiwi Green



Sweet Pink

NEW
SIZENEW
SIZES

ST8000 MEN

Sports-T

SIZES

S M L XL XXL **3XL**

FIT

BODY FIT

ST8100 WOMEN

Sports-T

XS S M L XL **XXL**

SIZES

BODY FIT

FIT

FABRIC

140 g/m²

100% ACTIVE-DRY® polyester; interlock

- ✓ TIGHT KNIT, ELASTIC FABRIC WITH SLEEK SURFACE
- ✓ QUICK-DRYING AND MOISTURE-WICKING
- ✓ NO LABEL IN COLLAR



White



Black Opal



Silver Grey



Granite Grey



Blue Midnight



Hawaii Blue



Crimson Red



Cyber Orange



Cyber Yellow



Kiwi Green



Sweet Pink



Deep Berry

40%

Deep Berry only in: S-XXL for men & S-XL for women



ST8010 MEN

Sports Top

SIZES

S M L XL XXL

FIT

BODY FIT

FABRIC

140 g/m²

100% ACTIVE-DRY® polyester; interlock

- ✓ TIGHT KNIT, ELASTIC FABRIC WITH SLEEK SURFACE
- ✓ QUICK-DRYING AND MOISTURE-WICKING
- ✓ NO LABEL IN COLLAR

ST8110 WOMEN

Sports Top

S M L XL

SIZES

BODY FIT

FIT



White



Black Opal



Sweet Pink



Deep Berry



Kiwi Green



Cyber Yellow





ST8050 MEN

Piqué Polo**SIZES****S M L XL XXL****NORMAL FIT****FIT****FABRIC****180 g/m²**100% ACTIVE-DRY[®] polyester; true piqué

- ✓ HIGH-QUALITY FUNCTIONAL PIQUÉ FABRIC
- ✓ WASHABLE AT 60°C
- ✓ RIB COLLAR AND CUFFS
- ✓ NO LABEL IN COLLAR



White



Black Opal



Slate Grey



Hawaii Blue



Pepper Red



Bahama Green



ST8440 MEN

Active 140 Sleeveless

SIZES	S M L XL XXL
FIT	NORMAL FIT
FABRIC	140 g/m²

100% ACTIVE-DRY® polyester;
bird-eyelet mesh

- ✓ LIGHT AND STRETCHY MESH FABRIC
- ✓ GREAT MOISTURE-CONTROL
- ✓ NO LABEL IN COLLAR



White



Black Opal



Crimson Red



ST8540 WOMEN

Active 140 Tank

SIZES	S M L XL
FIT	NORMAL FIT
FABRIC	140 g/m²

100% ACTIVE-DRY® polyester;
bird-eyelet mesh

- ✓ LIGHT AND STRETCHY MESH FABRIC
- ✓ GREAT MOISTURE-CONTROL
- ✓ NO LABEL IN COLLAR



White



Black Opal



Crimson Red



ST8030 MEN

Active 140 Team Raglan**SIZES**

S M L XL XXL

FIT

NORMAL FIT

FABRIC**140 g/m²**100% ACTIVE-DRY[®] polyester; sleek mesh

ST8130 WOMEN

Active 140 Team Raglan

S M L XL

SIZES

NORMAL FIT

FIT

- ✓ LIGHT AND STRETCHY MESH FABRIC WITH SLEEK SURFACE
- ✓ GREAT MOISTURE-CONTROL
- ✓ RAGLAN SLEEVES
- ✓ NO LABEL IN COLLAR



White



Black Opal



Silver Grey



Granite Grey



Hawaii Blue



Cyber Yellow



Bahama Green



ST8410 MEN

Active 140 Raglan

SIZES	S M L XL XXL
FIT	NORMAL FIT

ST8500 WOMEN

Active 140 Raglan

SIZES	S M L XL
FIT	NORMAL FIT

FABRIC
140 g/m²

100% ACTIVE-DRY[®] polyester; bird-eyelet mesh

- ✓ LIGHT AND STRETCHY MESH FABRIC
- ✓ GREAT MOISTURE-CONTROL
- ✓ RAGLAN SLEEVES
- ✓ NO LABEL IN COLLAR



White



Black Opal



Marina Blue



King Blue



Crimson Red



Cyber Yellow



Kiwi Green



Deep Lilac



ST8570 CHILDREN

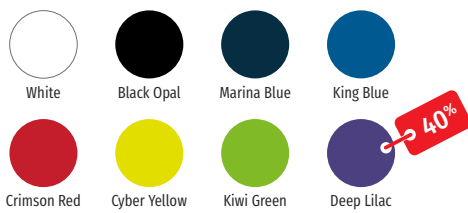
Active 140 Raglan Kids

SIZES	EU	S	M	L	XL
AGE	7-8	9-10	11-12	12-13	
CM	122-128	134-140	146-152	158-164	

FIT NORMAL FIT**FABRIC** 140 g/m²

100% ACTIVE-DRY® polyester;
bird-eyelet mesh

- ✓ LIGHT AND STRETCHY MESH FABRIC
- ✓ GREAT MOISTURE-CONTROL
- ✓ RAGLAN SLEEVES
- ✓ NO LABEL IN COLLAR



ST8400 MEN

Active 140 Crew Neck

SIZES	S	M	L	XL	XXL
FIT	NORMAL FIT				
FABRIC	140 g/m ²				

100% ACTIVE-DRY® polyester;
bird-eyelet mesh

- ✓ LIGHT AND STRETCHY MESH FABRIC
- ✓ GREAT MOISTURE-CONTROL
- ✓ NO LABEL IN COLLAR





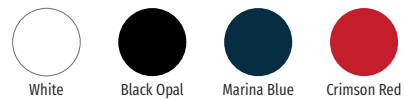
ST8450 MEN

Active 140 Polo

SIZES	S M L XL XXL
FIT	NORMAL FIT
FABRIC	140 g/m²

100% ACTIVE-DRY[®] polyester;
bird-eyelet mesh

- ✓ **LIGHT AND STRETCHY MESH FABRIC**
- ✓ **GREAT MOISTURE-CONTROL**
- ✓ **RIB COLLAR**
- ✓ **NO LABEL IN COLLAR**



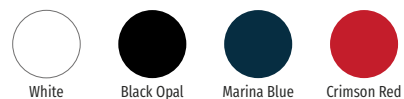
ST8420 MEN

Active 140 Long Sleeve

SIZES	S M L XL XXL
FIT	NORMAL FIT
FABRIC	140 g/m²

100% ACTIVE-DRY[®] polyester;
bird-eyelet mesh

- ✓ **LIGHT AND STRETCHY MESH FABRIC**
- ✓ **GREAT MOISTURE-CONTROL**
- ✓ **RAGLAN SLEEVES**
- ✓ **NO LABEL IN COLLAR**





ST8600 MEN

Cotton Touch

SIZES

S M L XL XXL

FIT

NORMAL FIT

FABRIC

160 g/m²

100% ACTIVE-DRY® polyester; single jersey “cotton touch”

ST8700 WOMEN

Cotton Touch

S M L XL

SIZES

NORMAL FIT

FIT

- ✓ FINE AND SMOOTH FABRIC THAT FEELS LIKE REAL COTTON
- ✓ MOISTURE-WICKING AND BREATHABLE
- ✓ NO LABEL IN COLLAR



White



Black Opal



Crimson Red



Cyber Orange



Cyber Yellow



Kiwi Green



Hawaii Blue

High-quality &
functional
**INTENSE
TECH**
by Stedman®





ST8020 MEN

Intense Tech

SIZES

S M L XL XXL

FIT

BODY FIT

FABRIC

140 g/m²

100% ACTIVE-DRY® polyester; jacquard

ST8120 WOMEN

Intense Tech

S M L XL

SIZES

BODY FIT

FIT

✓ BREATHABLE AND QUICK-DRYING ✓ HEATHERED LOOK ✓ NO LABEL IN COLLAR



Grey Heather



Anthra Heather



Marina Heather



SPORTS RECYCLED

by Stedman®

High-quality, moisture-wicking,
functional workout clothes, made
from recycled plastic bottles.





ST8830 MEN

Recycled Sports-T Move

SIZES	S M L XL XXL
FIT	NORMAL FIT

FABRIC
125 g/m²

100% ACTIVE-DRY® polyester (50% recycled)

ST8930 WOMEN

Recycled Sports-T Move

SIZES	S M L XL
FIT	NORMAL FIT

- ✓ ECO-FRIENDLY MATERIAL MADE FROM 4 RECYCLED PLASTIC BOTTLES
- ✓ VERY LIGHT FABRIC WITH HEATHERED LOOK
- ✓ ROUNDED HEM AND OVERCUT SLEEVES FOR WOMEN
- ✓ NO LABEL IN COLLAR, TEAR-AWAY LABEL IN SIDE SEAM



Made from 4 recycled plastic bottles.



ST8850 MEN

Recycled Sports-T Race

SIZES

S M L XL XXL

FIT

BODY FIT

FABRIC

160 g/m²

90% ACTIVE-DRY® polyester (50% recycled), 10% elastane

ST8950 WOMEN

Recycled Sports-T Race

S M L XL

SIZES

BODY FIT

FIT

✓ ECO-FRIENDLY MATERIAL MADE FROM 4 RECYCLED PLASTIC BOTTLES

✓ VERY STRETCHY AND AIRY MESH FABRIC ✓ HEATHERED LOOK WITH CONTRAST ELEMENTS

✓ NO LABEL IN COLLAR, TEAR-AWAY LABEL IN SIDE SEAM



Grey Heather



Denim Heather



Made from 4 recycled plastic bottles.



The
**RECYCLED
COLLECTION**
by Stedman®





ST8840 MEN

Recycled Sports-T Reflect

SIZES

S M L XL XXL

FIT

BODY FIT

FABRIC

190 g/m²

90% ACTIVE-DRY® polyester (50% recycled), 10% elastane

ST8940 WOMEN

Recycled Sports-T Reflect

S M L XL

SIZES

BODY FIT

FIT

✓ ECO-FRIENDLY MATERIAL MADE FROM 4 RECYCLED PLASTIC BOTTLES

✓ SUPER SOFT FABRIC WITH GREAT MOISTURE-CONTROL ✓ REFLECTING TAPE ON FRONT AND BACK

✓ NO LABEL IN COLLAR, TEAR-AWAY LABEL IN SIDE SEAM



Grey Heather



Blue Heather



Made from 4 recycled plastic bottles.



The
**RECYCLED
COLLECTION**
by Stedman®





ST5840 MEN

Recycled Scuba Jacket

SIZES

S M L XL XXL

FIT

NORMAL FIT

FABRIC

300 g/m²

ST5940 WOMEN

Recycled Scuba Jacket

XS S M L XL

SIZES

NORMAL FIT

FIT

Black Opal: 94% polyester (24% recycled), 6% elastane; Anthra Heather: 81% polyester (28% recycled), 13% viscose, 6% elastane

- ✓ ECO-FRIENDLY MATERIAL MADE FROM 8 RECYCLED PLASTIC BOTTLES
- ✓ STRETCHY AND BREATHABLE
- ✓ NO LABEL IN COLLAR, TEAR-AWAY LABEL IN SIDE SEAM



Black Opal



Anthra Heather



Made from 8 recycled plastic bottles.



SPORTS HIGH-END by Stedman®

High-end athletic wear made of innovative, stretchy ACTIVE-DRY® material or durable nylon fabrics. Moisture-wicking, breathable and modern.



Stedman®
collection



Sporty & stretchy

SEAMLESS RAGLAN

by Stedman®



ST8800 MEN

Seamless Raglan

SIZES

S M L XL XXL

FIT

BODY FIT

FABRIC

140 g/m²

58% ACTIVE-DRY® polyester, 42% nylon; jacquard

ST8900 WOMEN

Seamless Raglan

S M L XL

SIZES

BODY FIT

FIT

- ✓ LIGHT AND STRETCHY FABRIC WITH NYLON
- ✓ RAGLAN SLEEVES
- ✓ BREATHABLE SIDE PANELS
- ✓ QUICK-DRYING AND MOISTURE-WICKING

Black Opal
MelangeKing Blue
MelangeKiwi
Melange



ST8810 MEN

Seamless Raglan Flow

SIZES

S M L XL XXL

FIT

BODY FIT

FABRIC

180 g/m²

75% nylon, 25% ACTIVE-DRY® polyester

ST8910 WOMEN

Seamless Raglan Flow

S M L XL

SIZES

BODY FIT

FIT

- ✓ DURABLE, QUICK-DRYING FABRIC WITH NYLON
- ✓ RAGLAN SLEEVES
- ✓ MULTI-COLOUR GRADIENT PATTERN
- ✓ EXTRA HIGH ELASTICITY



Light Grey
Transition



Dark Grey
Transition



Blue
Transition



ST8820 MEN

Seamless Jacket

SIZES

S M L XL

FIT

BODY FIT

FABRIC

180 g/m²

75% nylon, 25% ACTIVE-DRY® polyester

ST8920 WOMEN

Seamless Jacket

S M L XL

SIZES

BODY FIT

FIT

- ✓ DURABLE, QUICK-DRYING FABRIC WITH NYLON
- ✓ RAGLAN SLEEVES
- ✓ MULTI-COLOUR GRADIENT PATTERN
- ✓ EXTRA HIGH ELASTICITY

Light Grey
TransitionDark Grey
TransitionBlue
Transition



ST8330 WOMEN

Sports Bra

SIZES	S M L XL
FIT	BODY FIT
FABRIC	300 g/m²

90% nylon, 10% elastane

- ✓ SEAMLESS CONSTRUCTION
- ✓ REMOVABLE CUP PADDING
- ✓ STRETCHY, DOUBLE-LAYER NYLON FABRIC
- ✓ OPTIMUM SUPPORT FOR HIGH-INTENSITY WORKOUTS



Black Opal

ST8320 WOMEN

3/4 Sports Tights

SIZES	S M L XL
FIT	BODY FIT
FABRIC	300 g/m²

90% nylon, 10% elastane

- ✓ STRETCHY AND DURABLE NYLON FABRIC
- ✓ WIDE RIB WAISTBAND
- ✓ SPORTY CONTRAST STRIPES ON THE SIDES



Black Opal

ST8990 WOMEN

Seamless Tights

SIZES	S M L XL
FIT	BODY FIT
FABRIC	300 g/m²

82% nylon, 18% elastane

- ✓ DURABLE NYLON FABRIC
- ✓ HIGH ELASTICITY
- ✓ BREATHABLE AND QUICK-DRYING



Black Opal



Grey Steel



Blue Midnight



Light & breathable
**PERFORMANCE
JACKET**
by Stedman®



ST5830 MEN

Performance Jacket**SIZES**

S M L XL XXL

FIT

NORMAL FIT

FABRIC**240 g/m²**

100% ACTIVE-DRY® polyester; melange

ST5930 WOMEN

Performance Jacket

S M L XL

SIZES

NORMAL FIT

FIT

- ✓ LIGHT AND BREATHABLE MELANGE FABRIC
- ✓ BRUSHED INSIDE
- ✓ NO LABEL IN COLLAR



Asphalt



Horizon



Coral



Orchid



JACKETS & FLEECE by Stedman®

An extensive fleece range for extra warmth, padded jackets and vests, quilted jackets as well as modern pilot and biker jackets.



Stedman®
collection

You asked for

MORE SIZES.

We listened.

*More sizes for men and women in
our most popular outdoor colours.*

ST5170 CHILDREN

Fleece Jacket Kids

SIZES	EU	S	M	L	XL
AGE	7-8	9-10	11-12	12-13	
CM	122-128	134-140	146-152	158-164	

FIT NORMAL FIT

FABRIC 220 g/m²

100% polyester;
micro fleece with anti-pilling treatment

- ✓ WARM AND SOFT WITH GREAT HEAT INSULATION
- ✓ BOTH SIDES BRUSHED
- ✓ NO LABEL IN COLLAR



Blue Midnight



Hawaii Blue



Scarlet Red



Kiwi Green





NEW
SIZE

ST5030 MEN

Fleece Jacket

SIZES S M L XL XXL **3XL**
FIT NORMAL FIT

FABRIC

220 g/m²

100% polyester; micro fleece with anti-pilling treatment

- ✓ WARM AND SOFT WITH GREAT HEAT INSULATION
- ✓ BOTH SIDES BRUSHED
- ✓ NO LABEL IN COLLAR

NEW
SIZES

ST5100 WOMEN

Fleece Jacket

XS S M L XL XXL **SIZES**
FIT NORMAL FIT



Black Opal



Blue Midnight



Scarlet Red



Grey Steel



Hawaii Blue



Kiwi Green



Cupcake Pink

40%

Men's size 3XL only in: Black Opal & Blue Midnight · Women's sizes XS & XXL only in: Black Opal, Blue Midnight & Scarlet Red



Vest p. 110



ST5010 MEN

Fleece Vest

SIZES

S M L XL XXL

FIT

NORMAL FIT

FABRIC

220 g/m²

100% polyester; micro fleece with anti-pilling treatment

ST5110 WOMEN

Fleece Vest

S M L XL

SIZES

NORMAL FIT

FIT

- ✓ WARM AND SOFT WITH GREAT HEAT INSULATION
- ✓ BOTH SIDES BRUSHED
- ✓ NO LABEL IN COLLAR



Black Opal



Blue Midnight



Scarlet Red



Grey Steel



Hawaii Blue



Kiwi Green



Cupcake Pink



Jacket p. 109

ST5020 MEN

Fleece Half-Zip

SIZES	S M L XL XXL
FIT	NORMAL FIT
FABRIC	170 g/m²

100% polyester;
micro fleece with anti-pilling treatment

- ✓ **LIGHTWEIGHT, WARM AND SOFT WITH GREAT HEAT INSULATION**
- ✓ **BRUSHED OUTSIDE**
- ✓ **NO LABEL IN COLLAR**



Black Opal



Grey Steel



Scarlet Red



ST5080 MEN

Hooded Fleece Jacket

SIZES	S M L XL XXL
FIT	NORMAL FIT
FABRIC	220 g/m²

100% polyester;
micro fleece with anti-pilling treatment

- ✓ **WARM AND SOFT WITH GREAT HEAT INSULATION**
- ✓ **BOTH SIDES BRUSHED**
- ✓ **NO LABEL IN COLLAR**



Black Opal



Grey Steel



Blue Midnight





Sporty & eco-friendly

RECYCLED HERO

by Stedman®





ST5860 MEN

Recycled Fleece Jacket Hero

SIZES	S M L XL XXL
FIT	NORMAL FIT

ST5960 WOMEN

Recycled Fleece Jacket Hero

SIZES	XS S M L XL
FIT	NORMAL FIT

FABRIC
210 g/m²

100% polyester (60% recycled)

- ✓ ECO-FRIENDLY MATERIAL MADE FROM 16 RECYCLED PLASTIC BOTTLES
- ✓ BRUSHED INSIDE
- ✓ NO LABEL IN COLLAR, TEAR-AWAY LABEL IN SIDE SEAM



Made from 16 recycled plastic bottles.



ST5090 MEN

Striped Fleece Jacket

SIZES

S M L XL XXL

FIT

NORMAL FIT

FABRIC

280 g/m²

100% polyester; knit fleece with anti-pilling treatment

ST5190 WOMEN

Striped Fleece Jacket

S M L XL

SIZES

NORMAL FIT

FIT

- ✓ WARM, STRETCHY KNIT FABRIC
- ✓ BRUSHED INSIDE
- ✓ NO LABEL IN COLLAR



Grey Steel



Brilliant Blue



ST5850 MEN

Knit Fleece Jacket

SIZES	S M L XL XXL
FIT	NORMAL FIT

ST5950 WOMEN

Knit Fleece Jacket

S M L XL	SIZES
NORMAL FIT	FIT

FABRIC
280 g/m²

100% polyester; knit fleece with anti-pilling treatment

- ✓ WARM, STRETCHY KNIT FABRIC
- ✓ BRUSHED INSIDE
- ✓ NO LABEL IN COLLAR



Light Grey
Melange



Dark Grey
Melange



Marina Blue
Melange



Blue
Melange



Purple
Melange



ST5060 MEN

Melange Fleece Jacket

SIZES

S M L XL XXL

NORMAL FIT

FIT

FABRIC

310 g/m²

100% polyester; melange fleece with anti-pilling treatment

✓ WARM AND VELVETY FLEECE FABRIC WITH GREAT HEAT INSULATION

✓ BOTH SIDES BRUSHED

✓ NO LABEL IN COLLAR



Anthra
Melange



Pumpkin
Melange



Olive
Melange



ST5040 MEN

Power Fleece Jacket

SIZES	S M L XL XXL
FIT	NORMAL FIT

ST5120 WOMEN

Power Fleece Jacket

S M L XL	SIZES
NORMAL FIT	FIT

FABRIC
280 g/m²

100% polyester; fleece with anti-pilling treatment

- ✓ VERY SOFT FABRIC WITH GREAT HEAT INSULATION
- ✓ BOTH SIDES BRUSHED
- ✓ NO LABEL IN COLLAR



Grey Heather Anthra Heather



ST5230 MEN

Softest Shell Jacket

SIZES	S M L XL XXL
FIT	NORMAL FIT

FABRIC
250 g/m²

94% polyester, 6% elastane

ST5330 WOMEN

Softest Shell Jacket

SIZES	S M L XL
FIT	NORMAL FIT

- ✓ LIGHTWEIGHT, 4-WAY STRETCH MATERIAL
- ✓ WATER-RESISTANT AND WIND REPELLENT
- ✓ ADJUSTABLE HEM AND SLEEVE HEMS
- ✓ NO LABEL IN COLLAR



Black Opal



Dolphin Grey



Marina Blue



ST5240 MEN

Softest Shell Hooded Jacket

SIZES	S M L XL XXL
FIT	NORMAL FIT

FABRIC

250 g/m²

94% polyester, 6% elastane

ST5340 WOMEN

Softest Shell Hooded Jacket

SIZES	S M L XL
FIT	NORMAL FIT

- ✓ LIGHTWEIGHT, 4-WAY STRETCH MATERIAL
- ✓ WATER-RESISTANT AND WIND REPELLENT
- ✓ ADJUSTABLE HEM AND SLEEVE HEMS
- ✓ NO LABEL IN COLLAR



White



Black Opal



Crimson Red



ST5210 MEN

Padded Vest

SIZES

S M L XL XXL

FIT

NORMAL FIT

FABRIC

ST5310 WOMEN

Padded Vest

S M L XL

SIZES

NORMAL FIT

FIT

shell and lining: 100% nylon; filling: 100% polyester

- ✓ HIGH-QUALITY, DURABLE NYLON
- ✓ WATER-RESISTANT AND WIND REPELLENT
- ✓ EXCELLENT HEAT INSULATION AT LIGHT WEIGHT
- ✓ NO LABEL IN COLLAR



Black Opal



Dark Blue



Bordeaux



ST5200 MEN

Padded Jacket

SIZES	S M L XL XXL
FIT	NORMAL FIT

FABRIC

ST5300 WOMEN

Padded Jacket

S M L XL	SIZES
NORMAL FIT	FIT

shell and lining: 100% nylon; filling: 100% polyester

- ✓ HIGH-QUALITY, DURABLE NYLON
- ✓ WATER-RESISTANT AND WIND REPELLENT
- ✓ EXCELLENT HEAT INSULATION AT LIGHT WEIGHT
- ✓ NO LABEL IN COLLAR



Black Opal



Light Grey




Dark Blue



Military Green



Bordeaux

A close-up portrait of a man with short, dark, wavy hair and a light beard. He is looking slightly to the left of the camera with a serious expression. He is wearing a black leather biker jacket with a high collar and a silver zipper. The background is a plain, light gray wall with a soft shadow of the man's head and shoulders cast behind him.

Animal-friendly

**BIKER
JACKET**

by Stedman®



ST5250 MEN

Biker Jacket

SIZES

S M L XL XXL

FIT

NORMAL FIT

FABRIC

ST5350 WOMEN

Biker Jacket

S M L XL

SIZES

NORMAL FIT

FIT

100% leather-look (polyurethane)

- ✓ ANIMAL-FRIENDLY FAUX LEATHER
- ✓ METAL ZIPPERS AND MODERN DETAILS
- ✓ ZIP OPENING IN BACK LINING FOR EASY DECORATION
- ✓ NO LABEL IN COLLAR



Black Opal



ST5260 MEN

Quilted Jacket

SIZES

S M L XL XXL

FIT

NORMAL FIT

FABRIC

100% polyester

ST5360 WOMEN

Quilted Jacket

S M L XL

SIZES

NORMAL FIT

FIT

- ✓ LIGHTWEIGHT DURABLE FABRIC WITH WARM FILLING
- ✓ WATER-RESISTANT AND WIND REPELLENT
- ✓ NO LABEL IN COLLAR



Black Opal



Military Green

ST5270 MEN

Quilted Blouson

SIZES S M L XL XXL**FIT** NORMAL FIT

100% polyester

- ✓ LIGHTWEIGHT DURABLE FABRIC WITH WARM FILLING
- ✓ WATER-RESISTANT AND WIND REPELLENT
- ✓ ZIP OPENING IN BACK LINING FOR EASY DECORATION
- ✓ NO LABEL IN COLLAR



Black Opal



ST5280 MEN

Pilot Jacket

SIZES S M L XL XXL**FIT** NORMAL FIT

100% nylon

- ✓ HIGH-QUALITY, DURABLE NYLON
- ✓ WATER-RESISTANT AND WIND REPELLENT
- ✓ ZIP OPENING IN BACK LINING FOR EASY DECORATION
- ✓ NO LABEL IN COLLAR



Black Opal



FABRICS

RECYCLED, ORGANIC, ACTIVE-DRY[®] AND MORE.

High-quality fabrics with unique properties and a great wearing comfort.

For production reasons, the colours of the fabric swatches may differ from those of the actual products.



RECYCLED POLYESTER

Our recycled polyester offers the same high-quality characteristics as conventional polyester but with a smaller environmental footprint. The production of recycled polyester requires far less energy, causes significantly less CO₂ emissions, and helps to keep plastic waste from going to landfills and our oceans. In the Stedman[®] collection you can find recycled polyester in sports shirts, sports jackets, sweatshirts, sweatpants and fleece jackets.



ORGANIC COTTON

Organic cotton is grown without the use of pesticides, herbicides or other chemical fertilizers and is therefore particularly gentle on people and nature. Our organic styles are made of 100% OCS-certified organic ring-spun cotton. Environmentally friendly, fashionable and absolutely soft on the skin. These styles offer all the advantages of a classic promotional T-shirt and at the same time the good feeling of having made a small contribution to environmental protection.



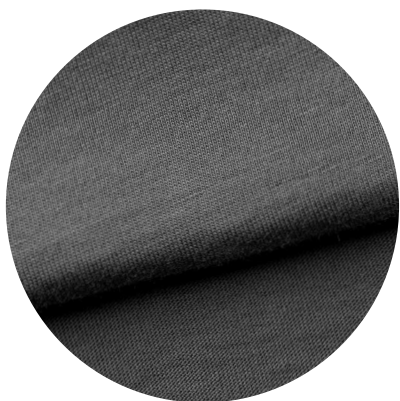
RING-SPUN COTTON

Cotton is a soft, absorbent and breathable natural fibre, making it the perfect choice for clothing worn close to the skin. T-shirts made of cotton fabric are very airy, durable and easy to clean. For our cotton styles, we only use high-quality ring-spun cotton. Ring-spun yarn is made by twisting and thinning the cotton strands to make a very fine, strong, soft rope of cotton fibres. Ring-spun cotton T-shirts are significantly softer, more durable and last longer than their regular counterparts.



VISCOSE

Viscose is a high-quality material made from the natural raw material cellulose. The fibre is very soft to the touch, moisture-absorbent and very breathable. It can be both glossy and matt and thus take on the look of wool, silk or cotton. T-shirts with a viscose share drape fluidly around your body, creating a premium wearing comfort as well as an elegant, flattering silhouette.



ELASTANE

Elastane is a durable, highly elastic material that returns to its original shape after each stretch. For our Stedman® collection we use the “full feeder” technology, allowing elastane to evenly spread over the entire surface of the fabric. This leads to a high wearing comfort and a smooth surface that is excellent for printing.



ACTIVE-DRY® POLYESTER

Stedman®'s ACTIVE-DRY® polyester is a quick-drying fabric with great moisture-control that is soft to the touch and very elastic. Therefore it is perfectly suitable for sports and functional clothing. The airy fabrics are very moisture-wicking and provide a pleasant feeling even during intensive workouts. T-shirts made of ACTIVE-DRY® polyester offer not only great wearing comfort, but also ideal conditions for various textile finishings.



FLEECE

Fleece jackets are popular and indispensable companions in everyday life or for outdoor activities, as they provide strong insulation and can absorb and release moisture very well. They are light, breathable and keep you pleasantly warm even in cooler weather. There are many different kinds of fleece fabrics. The Stedman® collection includes Micro Fleece, Knit Fleece, Melange Fleece and Power Fleece.



NYLON

Nylon fabrics are smooth, moisture-wicking and very durable, making them the perfect choice for athletic and outdoor clothing. Nylon is one of the lightest textile fibres and at the same time one of the strongest. Thanks to its high elasticity and moisture-wicking properties, nylon textiles offer great wearing comfort and excellent freedom of movement. In the Stedman® collection you can find nylon in sports shirts, sports tights, sports bras, padded jackets and vests.



POLYURETHANE (LEATHER LOOK)

Polyurethane fabrics are durable and abrasion-resistant, yet soft, light and breathable. As such, they are used to create more comfortable and sophisticated weatherproof clothing that is even washable at 40°C. Thanks to the high-quality polyurethane, our Biker Jackets do not only look like leather, but also have similar stretch, stiffness and permeability properties like genuine leather jackets.



SOFTEST SHELL

The outstanding properties of our Softest Shell styles are their low weight and the combination of two layers of clothing in one. Softest Shell combines an outer layer to protect against wind and weather with an inner mesh layer. Thus, Softest Shell products are wind-, water- and dirt-repellent. The pleasantly elastic material ensures a high level of wearing comfort.

SIZES



MEN

EU	DE, FR, ES, PT	IT	UK	BODY HEIGHT		CHEST		WAIST		HIPS	
				cm	inches	cm	inches	cm	inches	cm	inches
XS	42-44	32-34	32-34	172-175	67.5-69	78-85	30.5-33.5	66-73	26-28.5	84-88	33-34.5
S	44-46	34-36	34-36	173-182	68-71.5	86-93	34-36.5	74-81	29-32	92-96	36-38
M	48-50	38-40	38-40	175-184	69-72.5	94-99	37-39	82-89	32.5-35	100-104	39.5-41
L	52-54	42-44	42-44	177-186	69.5-73	100-105	39.5-41.5	90-97	35.5-38	105-110	41.5-43.5
XL	56-58	46-48	46-48	179-188	70.5-74	106-111	41.5-43.5	98-105	38.5-41.5	111-116	43.5-45.5
XXL	60-62	50-52	50-52	181-190	71.5-75	112-117	44-46	106-113	41.5-44.5	117-122	46-48
3XL	64-66	54-56	54-56	185-191	73-75	118-123	46.5-48.5	114-121	45-47.5	123-128	48.5-50.5
4XL	68-70	58-60	58-60	185-191	73-75	124-129	49-51	122-129	48-51	129-132	51-52
5XL	72	62	62	185-191	73-75	130-135	51-53	130-135	51-53	133-138	52.5-54.5

WOMEN

EU	DE	FR, ES, PT	IT	UK	BODY HEIGHT		CHEST		WAIST		HIPS	
					cm	inches	cm	inches	cm	inches	cm	inches
XS	32-34	34-36	36-38	6-8	165-172	65-67.5	74-84	29-33	58-65	23-25.5	85-90	33.5-35.5
S	36-38	38-40	40-42	10-12	165-172	65-67.5	85-92	33.5-36	66-73	26-28.5	91-96	36-38
M	40-42	42-44	44-46	14-16	165-172	65-67.5	93-97	36.5-38	74-81	29-32	97-102	38-40
L	44-46	46-48	48-50	18-20	165-172	65-67.5	98-107	38.5-42	82-90	32.5-35.5	103-110	40.5-43.5
XL	48-50	50-52	52-54	22-24	165-172	65-67.5	108-117	42.5-46	91-102	36-40	111-118	43.5-46.5
XXL	50-52	52-54	54-56	24-26	165-172	65-67.5	118-123	46.5-48.5	103-114	40.5-45	119-124	47-49
3XL	54-56	56-58	58-60	28-30	165-172	65-67.5	124-134	49-53	115-126	45.5-49.5	125-135	49-53
4XL	58-60	60-62	62-64	32-34	165-172	65-67.5	135-145	53-57	127-136	50-53.5	136-146	53.5-57.5

CHILDREN

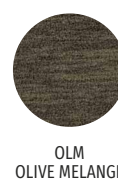
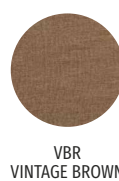
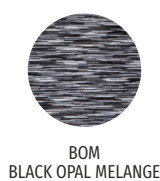
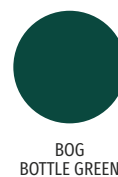
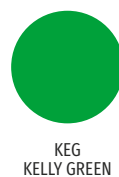
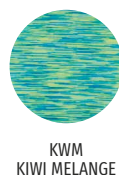
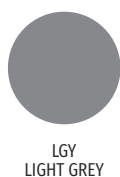
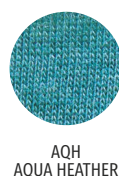
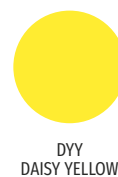
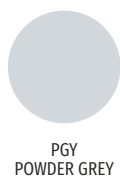
EU	AGE	BODY HEIGHT		CHEST		WAIST		HIPS	
		cm	inches	cm	inches	cm	inches	cm	inches
3XS	1-2	86-92	34-36	53-54	21-21.5	49-52	19.5-20.5	52-56	20.5-22
XXS	3-4	98-104	38.5-41	55-56	21.5-22	52-53	20.5-21	57-60	22.5-23.5
XS	5-6	110-116	43.5-45.5	57-58	22.5-23	54-55	21.5	61-63	24-25
S	7-8	122-128	48-50.5	61-64	24-25	56.5-58	22-23	66-69	26-27
M	9-10	134-140	53-55	67-70	26.5-27.5	59-61	23-24	72-75	28.5-29.5
L	11-12	146-152	57.5-60	73-76	28.5-30	62-65	24.5-25.5	78-81	30.5-32
XL	12-13	158-164	62-64.5	79-82	31-32.5	65-69	25.5-27	85-87	33.5-34.5

UNISEX

EU	DE		FR, ES, PT		IT		UK	
	WOMEN	MEN	WOMEN	MEN	WOMEN	MEN	WOMEN	MEN
XXS	32-34	–	34-36	–	36-38	–	6-8	–
XS	36-38	42-44	38-40	42-44	40-42	30-32	10-12	30-32
S	40-42	44-46	42-44	44-46	44-46	34-36	14-16	34-36
M	44-46	48-50	46-48	48-50	48-50	38-40	18-20	38-40
L	48-50	52-54	50-52	52-54	52-54	42-44	22-24	42-44
XL	50-52	56-58	52-54	56-58	54-56	46-48	24-26	46-48
XXL	54-56	60-62	56-58	60-62	58-60	50-52	28-30	50-52
3XL	58-60	64-66	60-62	64-66	62-64	54-56	32-34	54-56
4XL	–	68-70	–	68-70	–	58-60	–	58-60
5XL	–	72	–	72	–	62	–	62

COLOURS

To easily find all products
by colour, please go to
stedman.eu





CLH
CORAL HEATHER



PRO
POWDER ROSE



PBL
POWDER BLUE



CAL
CORAL



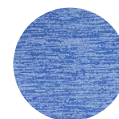
SPK
SWEET PINK



VRO
VINTAGE ROSE



VBL
VINTAGE BLUE



BLH
BLUE HEATHER



SAL
SALMON



SAP
SALMON PINK



OCH
ORCHID



LBL
LIGHT BLUE



BBL
BRILLIANT BLUE



OCB
OCEAN BLUE



COR
CYBER ORANGE



BOR
BRILLIANT ORANGE



CUP
CUPCAKE PINK



BRR
BRIGHT ROYAL



HOR
HORIZON



HWB
HAWAII BLUE



ORA
ORANGE



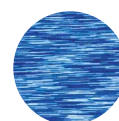
SRE
SCARLET RED



LAP
LAVENDER PURPLE



KIB
KING BLUE



KBM
KING BLUE MELANGE



PAB
PACIFIC BLUE



PUM
PUMPKIN



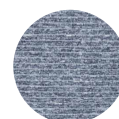
CSR
CRIMSON RED



PRM
PURPLE MELANGE



DMB
DENIM BLUE



DMH
DENIM HEATHER



BLM
BLUE MIDNIGHT



PUH
PUMPKIN HEATHER



PER
PEPPER RED



PRH
PURPLE HEATHER



TUB
TRUE BLUE



NAV
NAVY BLUE



NAH
NAVY HEATHER



PPM
PUMPKIN MELANGE



BOD
BORDEAUX



DLC
DEEP LILAC



DAB
DARK BLUE



MAB
MARINA BLUE



MAH
MARINA HEATHER



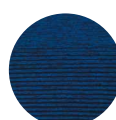
CEH
CHERRY HEATHER



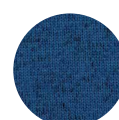
BGR
BURGUNDY RED



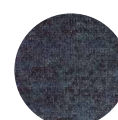
DBY
DEEP BERRY



BLT
BLUE TRANSITION



BUM
BLUE MELANGE



MBM
MARINA BLUE MELANGE

PRINT & EMBROIDERY

When it comes to our garments, style, function and comfort are not the only things that matter to us. We pay particular attention to the most diverse methods of printability so that your various decoration techniques can be applied to our products in outstanding quality.

Our fabrics offer an even and smooth surface, which enables an optimal printing result.

To meet the highest demands, we are constantly working to adapt our products to the latest printing techniques.

To do this, we test each and every product together with our print test team. To continuously optimise our products, we are constantly looking for printability testers. You are welcome to join our print test team. Simply fill out the registration form at:

stedman.eu/print-tester



Screen printing

Screen printing is the most widely used printing process in the promotional textile industry. Here, the printing ink is pressed through a stencil onto the textile. We divide screen printing into 3 types:

Plastisol screen printing

The most popular colours in textile screen printing are plastisol colours. The advantages of plastisol inks are, among other things, their high opacity, long durability after numerous washings and the implementation of special colours.

✓ Plastisol printing requires a smooth surface, so we recommend all our products except fleece & quilted or padded articles.

Water-based screen printing

The big advantage of this printing technique is the feel. Prints with water-based screen printing ink are very smooth. After washing the printed shirt you will hardly feel any difference between the printed and the unprinted area.

✓ We recommend this environmentally friendly and water-based screen printing on 100% cotton, our popular cotton-elastane shirts and on all our sweat products.

Discharge

For discharge printing, the ink is mixed with a bleaching agent, which brightens the colour of the textile. Due to the brightened material, the ink has a higher opacity and the printing layer can be kept very thin. Discharge printing offers a particularly high-quality feel, as the ink is hardly noticeable.

✓ The discharge process requires the same fabric compositions as water-based screen printing, but not every colour is suitable.



Transfer

With all transfer techniques, the design is applied to a carrier and then pressed onto the textile. Under transfer we have summarised various types of finished transfers (Aqua, Nylon...) as well as Flex, Flock & Sublimation.

✓ Here a smooth surface is needed for pressing, which is why we recommend all our products except fleece & quilted or padded jackets and vests.

Sublimation printing

In sublimation printing, a special ink is used that turns into gas when heat is applied and can thereby be absorbed into the fibres of the textile. Sublimation printing offers particularly long durability and a high-quality feel.

✓ A polyester layer is required for this, which is why we can recommend all our polyester sports shirts. As sublimation printing does not provide sufficient opacity on dark textiles, we only recommend light colours for sublimation.



Direct printing

DTG (direct to garment) printing is one of the latest printing techniques and is becoming increasingly popular in the textile printing industry. The design is applied directly to the textile fabric using an inkjet process and is then fixed using heat.

✓ We recommend DTG on 100% cotton, our popular cotton-elastane shirts and on all our sweat products.



Embroidery

Embroidery with needle and thread can be a finishing option for almost all textiles.

✓ We can especially recommend all our jackets, whether fleece, softshell, imitation leather or nylon. But also our sweat products are perfect for embroidery. In general, we can recommend all fabrics that weigh more than 145 g/m².



For more information on print & embroidery please visit our website:

stedman.eu/printability

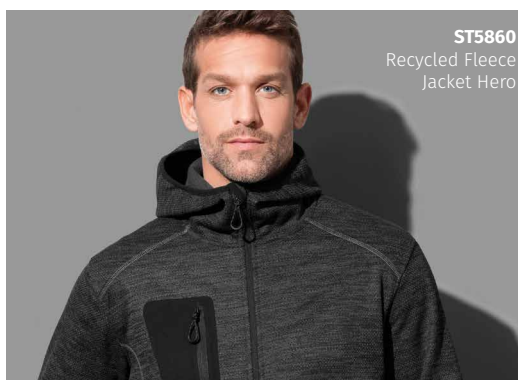


INDEX

The Stedman® collection 2021
sorted by article number.

Men's

N1000	Nano	25	ST8450	Active 140 Polo	84
ST2000	Classic-T Unisex	18	ST8600	Cotton Touch	85
ST2010	Classic-T Fitted	22	ST8800	Seamless Raglan	99
ST2020	Classic-T Organic Unisex	20	ST8810	Seamless Raglan Flow	100
ST2100	Comfort-T 185	23	ST8820	Seamless Jacket	101
ST2130	Comfort-T 185 Long Sleeve	50	ST8830	Recycled Sports-T Move	90
ST2300	Classic-T V-neck	40	ST8840	Recycled Sports-T Reflect	93
ST2500	Classic-T Long Sleeve	50	ST8850	Recycled Sports-T Race	91
ST2800	Classic Tank Top	48	ST9000	Ben Crew Neck	28
ST2810	Tank Top	49	ST9010	Ben V-neck	41
ST3000	Polo	56	ST9020	Morgan Crew Neck	29
ST3400	Polo Long Sleeve	57	ST9040	Morgan Long Sleeve	51
ST4000	Unisex Sweatshirt Classic	65	ST9050	Henry Polo	58
ST4100	Sweat Hoodie Classic	67	ST9060	Harper Polo	59
ST4200	Unisex Sweat Hoodie Light	66	ST9080	Knit Long Sleeve	53
ST5010	Fleece Vest	110	ST9100	Finest Cotton-T	32
ST5020	Fleece Half-Zip	111	ST9200	James Organic Crew Neck	31
ST5030	Fleece Jacket	109	ST9210	James Organic V-neck	44
ST5040	Power Fleece Jacket	117	ST9220	Slub Organic	37
ST5060	Melange Fleece Jacket	116	ST9400	Shawn Slub Crew Neck	35
ST5080	Hooded Fleece Jacket	111	ST9410	Shawn Slub V-neck	47
ST5090	Striped Fleece Jacket	114	ST9430	Shawn Henley T-shirt	36
ST5200	Padded Jacket	121	ST9450	Shawn Oversized Slub	38
ST5210	Padded Vest	120	ST9460	Shawn Henley Long Sleeve	54
ST5230	Softest Shell Jacket	118	ST9600	Clive Crew Neck	27
ST5240	Softest Shell Hooded Jacket	119	ST9610	Clive V-neck	43
ST5250	Biker Jacket	123	ST9620	Clive Long Sleeve	52
ST5260	Quilted Jacket	124	ST9630	Clive Relaxed	26
ST5270	Quilted Blouson	125	ST9690	Dean Deep V-neck	42
ST5280	Pilot Jacket	125	ST9691	Dexter Boxers	61
ST5600	Unisex Sweat Hoodie Select	71	ST9692	Dexter Briefs	61
ST5610	Sweat Jacket Select	73	ST9800	Luke Crew Neck	33
ST5620	Sweatshirt Select	64	ST9810	Luke V-neck	45
ST5630	Recycled Unisex Sweat Hoodie	68	ST9850	David Oversized	39
ST5650	Recycled Unisex Sweatpants	69	ST9860	Luke Henley Long Sleeve	55
ST5830	Performance Jacket	105			
ST5840	Recycled Scuba Jacket	95			
ST5850	Knit Fleece Jacket	115			
ST5860	Recycled Fleece Jacket Hero	113			
ST8000	Sports-T	77			
ST8010	Sports Top	78			
ST8020	Intense Tech	87			
ST8030	Active 140 Team Raglan	81			
ST8050	Piqué Polo	79			
ST8400	Active 140 Crew Neck	83			
ST8410	Active 140 Raglan	82			
ST8420	Active 140 Long Sleeve	84			
ST8440	Active 140 Sleeveless	80			



ST5860
Recycled Fleece
Jacket Hero

Women's

N1100	Nano	25	ST9120	Megan Crew Neck	29
ST2000	Classic-T Unisex	18	ST9130	Megan V-neck	41
ST2020	Classic-T Organic Unisex	20	ST9150	Hanna Polo	59
ST2160	Comfort-T 185	23	ST9180	Knit Long Sleeve	53
ST2600	Classic-T Fitted	19	ST9300	Janet Organic Crew Neck	31
ST2620	Classic-T Organic Fitted	21	ST9310	Janet Organic V-neck	44
ST2700	Classic-T V-neck	40	ST9320	Slub Organic	37
ST2900	Classic Tank Top	48	ST9500	Sharon Slub Crew Neck	35
ST3100	Polo	56	ST9510	Sharon Slub V-neck	47
ST4000	Unisex Sweatshirt Classic	65	ST9530	Sharon Henley T-shirt	36
ST4110	Sweat Hoodie Classic	67	ST9550	Sharon Oversized Slub	38
ST4200	Unisex Sweat Hoodie Light	66	ST9580	Sharon Henley Long Sleeve	54
ST5100	Fleece Jacket	109	ST9700	Claire Crew Neck	27
ST5110	Fleece Vest	110	ST9710	Claire V-neck	43
ST5120	Power Fleece Jacket	117	ST9720	Claire V-neck Long Sleeve	52
ST5190	Striped Fleece Jacket	114	ST9730	Claire Relaxed	26
ST5300	Padded Jacket	121	ST9900	Lisa Crew Neck	33
ST5310	Padded Vest	120	ST9910	Lisa V-neck	45
ST5330	Softest Shell Jacket	118	ST9950	Daisy Oversized	39
ST5340	Softest Shell Hooded Jacket	119			
ST5350	Biker Jacket	123			
ST5360	Quilted Jacket	124			
ST5600	Unisex Sweat Hoodie Select	71			
ST5630	Recycled Unisex Sweat Hoodie	68			
ST5650	Recycled Unisex Sweatpants	69			
ST5700	Sweat Hoodie Select	70			
ST5710	Sweat Jacket Select	73			
ST5930	Performance Jacket	105			
ST5940	Recycled Scuba Jacket	95			
ST5950	Knit Fleece Jacket	115			
ST5960	Recycled Fleece Jacket Hero	113			
ST8100	Sports-T	77			
ST8110	Sports Top	78			
ST8120	Intense Tech	87			
ST8130	Active 140 Team Raglan	81			
ST8320	3/4 Sports Tights	102			
ST8330	Sports Bra	102			
ST8500	Active 140 Raglan	82			
ST8540	Active 140 Tank	80			
ST8700	Cotton Touch	85			
ST8900	Seamless Raglan	99			
ST8910	Seamless Raglan Flow	100			
ST8920	Seamless Jacket	101			
ST8930	Recycled Sports-T Move	90			
ST8940	Recycled Sports-T Reflect	93			
ST8950	Recycled Sports-T Race	91			
ST8990	Seamless Tights	102			
ST9110	Finest Cotton-T	32			

Children's

ST2200	Classic-T Kids	19
ST2220	Classic-T Organic Kids	21
ST3200	Polo Kids	57
ST5170	Fleece Jacket Kids	108
ST8170	Sports-T Kids	76
ST8570	Active 140 Raglan Kids	83
ST9370	Jamie Organic Kids	30

Unisex

ST2000	Classic-T Unisex	18
ST2020	Classic-T Organic Unisex	20
ST4000	Unisex Sweatshirt Classic	65
ST4200	Unisex Sweat Hoodie Light	66
ST5600	Unisex Sweat Hoodie Select	71
ST5630	Recycled Unisex Sweat Hoodie	68
ST5650	Recycled Unisex Sweatpants	69

You can **download** the digital
Stedman® catalogue, colour card,
product sheets, and more at:
stedman.eu/tools

For the production of
this catalogue we have chosen
sustainable printing:



SMETA



The PEFC Council (Programme for the Endorsement of Forest Certification schemes) is an independent, non-profit, nongovernmental organization, founded in 1999 which promotes sustainably managed forests through independent third party certification. The PEFC provides an assurance mechanism to purchasers of wood and paper products that they are promoting the sustainable management of forests.